

EDISION®



picco T265 pro **DVB T2/C**

Digital Terrestrial & Cable Receiver DVB-T2/C H.265/HEVC



User's Guide



HEVCAdvance™
Covered by Patents at
patentlist.hevcadvance.com



picco T265 pro

picco T265 pro



For information about **EDISION Hardware or Software** matters, please contact **support@edision.gr**

The CE certificate of the product is available on our webpage, by visiting this link: **<https://www.edision.gr/en/support>**

Contents

► Safety	4-5
► Remote control	6
► Description	7
► Features	8
► Information Bar (InfoBar)	9
► EDIVISION – Your Electronic Program Guide	10-11
► Installation	12
Terrestrial Scan DVB-T/T2	12
Cable Scan DVB-C	13
► Channel	14
Organizing Services	14
Organizing Favourites	16
Delete All Channels	17
► System	18
Language	18
Software upgrade	19
Timer setting	20
Miscellaneous Settings	20
AV setting	21
Lock Control	21
Time Setting	22
Information	22
► Media / Internet	23
Network Setting	23
Record Files	24
PVR Management*	24
YouTube	25
Weather	25
Video	26
Music	26
Photos	26
USB Remove	26

*It is not possible to use the Programmable Decoder Activation and the Programmable Recording functions, when the decoder is connected for power supply to the USB port of the TV. To use these functions, please connect the decoder with an external USB 5V 1A / 220v DC power supply unit.

► Important safety instructions

- 1) Please read these instructions carefully.
- 2) Keep these instructions in a safe place for future reference.
- 3) Pay extra attention to «warning» points.
- 4) Follow all instructions.
- 5) Do not use the device near water.
- 6) Clean with a dry cloth only.
- 7) Do not use near heat sources, such as radiators, heat accumulators, ovens or other devices (including amplifiers) generating heat.
- 8) Only operate this product with the type of power source indicated on the label. If you are unsure about the type of power supply you use at home, ask your electricity supplier. Disconnect the device from the mains before maintenance or installation procedure.
- 9) Protect the mains cable from damage.
- 10) Only use auxiliary devices/accessories specified by the manufacturer.
- 11) Disconnect the device during thunderstorms or extended periods of non-use.
- 12) All maintenance work should be carried out by qualified service personnel. Maintenance is required when the device is damaged in any way, including damage to the mains cable or mains plug. Also in case the device becomes exposed to liquids or moisture, was dropped or does not function properly.
- 13) Make sure that the ventilation slots are always unobstructed.
- 14) Attention should be paid to the environmental aspect of battery disposal.
- 15) Only use the device in moderate climate.

WARNING: In order to avoid the risk of fire or electric shock, do not expose this device to rain or moisture.

WARNING: The batteries should not be exposed to excessive heat and heat sources such as direct sunlight, fire, etc.



This symbol indicates that there is risk of electric shock.



This symbol indicates that the operating instructions contain important operating and maintenance information.



This symbol indicates that the product has a double insulation between voltage and user accessible parts. Only use parts provided by the manufacturer during repair.



This symbol on the product or in the operating instructions indicates that the electrical or electronic device must be disposed of separately from household waste at the end of the service life. Separate collection systems exist for recycling.

For further information, please contact your local authorities or your dealer where you purchased the product.

► Remote control



- POWER**
Switches between operation and standby
- MUTE**
Mutes or unmutes the audio temporarily
- VOL+ / VOL -**
Scrolls up (+) or down (-) change the volume
- PAGE+ / PAGE -**
Scrolls the channel-list forward or backward
- V. FORMAT**
Changes the display TV standard
- FIND**
To search e.g. channels & show SAT list
- Menu**
Open main menu & select sub menu using by navigation button
- INFO**
Displays the information bar
- EXIT**
Stops a menu/pop-up window
- EPG**
Selection of the electronic program support EDIVISION
- RECALL**
Returns to previous channel
- TV/RADIO**
Switch to TV mode. Switch to Radio mode

ADJUSTMENT OF TELEVISION FUNCTIONS



Your set-top-box remote control has 4 learning-function keys, in the up right hand side TV keypad panel area. Each one can be used accordingly as the following example:

1. Turning your TV set ON/OFF **[SET]**
2. Increasing/decreasing volume **[VOL+ , VOL-]**
3. Switching between TV/AV mode **[TV/AV]**

The other 39 keys are for the control of the EDISION set-top-box.

- Press **[SET]** key in the up right hand side TV keypad panel area continuously for 5 Sec. until the LED lights up and keep lighting, then release the key. This means the remote control is in the learning mode.
- Within 10 seconds, press the key in the original TV IR control, which needs to be learned, for example the **[POWER]** key, then the red LED is flashing. It means this button is ready to receive the learning signal.
- Aim the emission port of the original TV remote control at the front at the emission port at the front of your set-top box remote control (distance between these two ports has to be about 2~3 CM).
- Then press the key which is to be learned in your original TV remote control, for example the **[POWER]** key of your original TV remote control continuously for 3 seconds. If the red LED flashes quickly for three times and keep lighting, it means the set-top box remote control has succeeded in receiving the signal and you have completed the learning procedure of ON/OFF **[TV POWER]** key.
- Then release the **[POWER]** key of your original TV remote control.

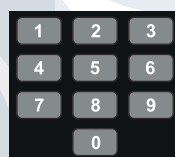
If the copying procedure fails , the red LED will blink and stay OFF. In this case please repeat the procedure.

For the next programmable function, please repeat steps 1 to 2:

- Switching between TV/AV mode **[TV/AV]**
- Increasing/decreasing volume **[VOL+ , VOL-]**

Now you can operate your TV with the 4 programmed by you keys of your set-top box remote control.

During the operation, the LED will flash to indicate that the signal is transmitted!





NUMERIC KEY (0-9)
Control the numerical operation and change the Channel/Service number directly

- Displays a file-list
- Safe USB Removal
- REC**
Activates immediately recording-option
- Fast Possibility backward
- Fast-forward capability
- PLAY/PAUSE**
Play start/pause
- Stops timeshift, recording or playing
- Allows you to set the time at which the Receiver autom. switches to standby mode
- AUDIO**
Activates the audio-menu
- TV/STB**
Option button. Switching between TV/AV mode (Not in HDMI mode)
- TXT**
Activates the menu "Subtitle/teletext"
- FAV**
Displays favorite lists (if any)

► Description

Front Panel

- ① POWER button: () Activates/Deactivates the device
- ② Buttons: (-/+, ) for moving in the program lists and for volume adjustment
- ③ Display LED, displays current information
- ④ Infrared sensor for the reception of remote control commands




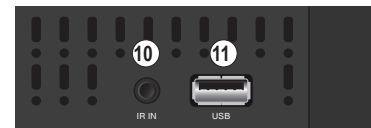
Back Panel

- ⑤ ANT IN: Input for connecting to terrestrial or cable signal from the antenna
- ⑥ S/PDIF: Audio interface for amplifier/audio console
- ⑦ HDMI: Connection to an HDTV quality TV
- ⑧ SCART: For connecting to a TV set, using SCART cable [not for HD TV]
- ⑨ Powering (DC 5V) via the USB port of the TV or with 5V power supply



Subpages

- ⑩ IR IN: Infrared connection port
- ⑪  / USB: Connection for USB storage devices



Connecting and switching on

Note: For trouble-free signal reception your antenna and cable installation should be calibrated and inspected by a qualified professional with a digital TV-level-measuring instrument.

Note: For trouble-free signal reception your antenna and cable installation should be calibrated and inspected by a qualified professional with a digital TV-level-measuring instrument.

- Connect the receiver using **HDMI cable** via the HDMI output port to your TV's HDMI input port.
- Then connect the coaxial cable from the terrestrial antenna to the **ANT IN** input of the receiver.
- Insert the batteries into the remote control. Notes on the remote control can be found on the back of these instructions.
- For STB powering (DC 5V) connect the receiver to the power supply or via TV USB port.
- The receiver starts with the BOOT process and is operational within a short time.



► Features

Technical features:

- Type: Digital Terrestrial & Cable Receiver DVB-T2/C H.265/HEVC 10 Bit
- H.265/HEVC 10 Bit decoding support (covered by patents listed at patentlist.hevcadvance.com)
- Resolution: 576i, 576p, 720p/50Hz, 720p/60Hz, 1080i/50Hz, 1080i/60Hz, 1080p/50Hz, 1080p/60Hz
- Video resolution up to Full HD 1080p
- LED Display & Front Panel Buttons
- Ports: ANT IN, HDMI, SCART, SPDIF, USB, IR, DC 5V
- USB WiFi Support
- Dolby Digital & AC3 support
- Apps: Youtube, Weather Forecast
- Multilingual OnScreenDisplay
- EDIVISION electronic program guide
- Supports Picture In Grafik (PIG)
- Channel Edit and Favourite Lists
- Auto and Manual channel search
- PVR via USB
- Time Shift function
- Subtitle support
- Teletext support
- Software upgrade & backup via USB
- Supports Online Software upgrade HTTP
- Supports FAT 16/32, NTFS
- Parental control
- PSU 2in1: Powered via TV USB port or with power supply unit 5V
- Media player H.265 (MP3/AC3/AAC/JPEG/PNG/MP4/MOV/AVI/MKV/MPG/MPEG/Xvid/DviX)

Applications:

- Youtube
- Weather Forecast

Front Panel:

- Display: LED
- Display Buttons: Power, Channel +/-, Volume +/-

Side Panels:

- 1 x Jack to IR
- 1 x USB 2.0 slot

Back Panel:

- Input ANT-IN: 1x IEC-type
- Connection TV: 1x HDMI, 1x Scart
- Video output: 1x HDMI, 1x Analog Video
- Audio output: Coaxial optical (S/PDIF)
- Powering (DC 5V) via the USB port of the TV or with 5V power supply

Package includes:

- IR remote control 2-in-1
- USB power supply unit 5V
- USB power cable
- Jack to IR Cable
- 2 x "AAA" batteries
- 2 x Self-adhesive pads
- Mini Manual GR/EN/DE/ES/IT/F

General:

- Dimensions: (W x H x D): 125x86x33 (mm)
- Weight: 0,5 kg
- Color: black
- Warranty: 2 year

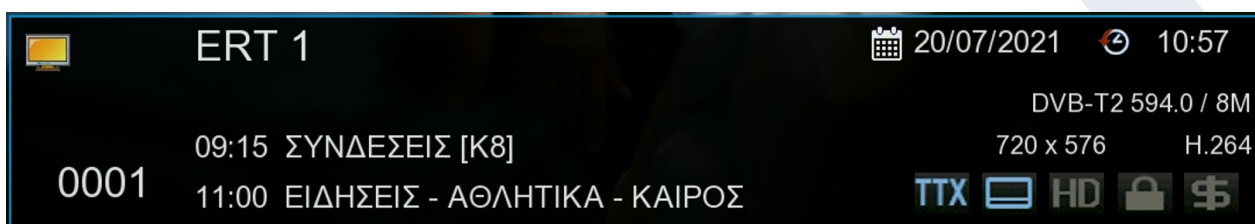


► Information Bar (InfoBar)

When in the TV/Radio mode, the 'INFO' button displays an information bar (InfoBar) at the lower edge of the screen. This bar is faded-in up to 5 seconds.

How to change the duration of fading of the information bar:

1. Press the 'MENU' button to open the main menu.
2. Use the left/right arrow buttons to navigate to the 'System' item.
3. Use the up/down arrow buttons to navigate to the 'Other settings' menu item and press the OK button.
4. Use the left/right arrow buttons to select the value in seconds you want to set (max. 10s) in the 'OSD time exceeded' item.
5. Press the EXIT button to exit the menu.



The information bar in TV or Radio mode displays a lot of information about the current program and the selected channel:

- The place in the list of programs
- The name of the channel
- The current show (if available) along with the start time
- The next show (if available) along with the start time
- The time and date
- If the program is blocked
- If the channel/program is shown in HD
- If the channel is in the favourites list
- If the channel is broadcast encoded
- TTX: displays if there are Videotext/subtitles for the current show

Functions and settings:

When the information bar appears, you can display (again) the **INFO button** to display detailed information about the current program (if available). they. With the **left/right** arrows you switch between the information for the current and the next show. With the **red key** you can display further (technical) information. With the **EXIT key** you exit the menu of detailed information.

With the **EXIT key** you turn off the information bar again.

► EDIVISION - Your electronic program guide

Basic information: EDIVISION is an online program guide with its own OSD menu. EDIVISION displays the information provided by the program vendor in a variety of ways, concisely and concisely. Furthermore, you can use it to schedule up to 8 time-adjustable recordings (Timer). Note that not all channels/program providers have accompanying program information.

The program driver is activated with the “**EDIVISION**” key on the remote control.

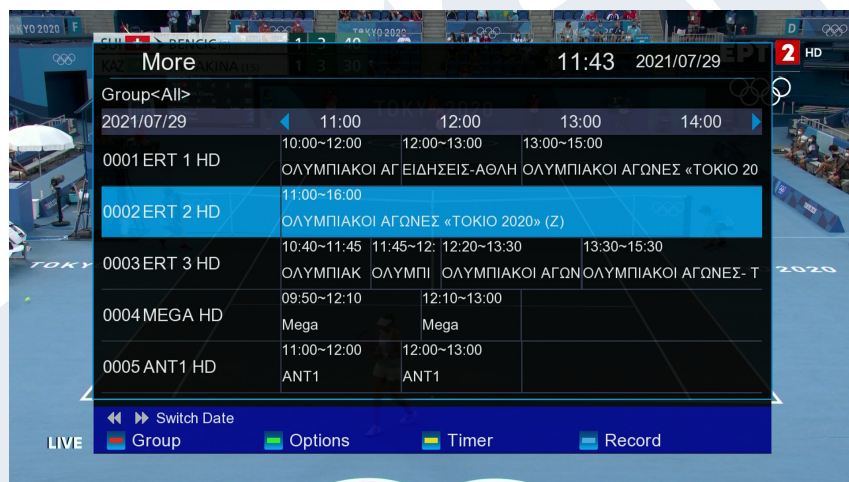


Functions and settings:

Depending on what mode you are in, the window 'EDIVISION' also has different reticulation. Use the green key to select the function (Now EPG, Next EPG, More, Schedule).

In the “Now EPG” and “Next EPG” modes you will find information on the current or next show in text form on the upper left, while on the top right you can see the current image on the TV screen (in TV mode). At

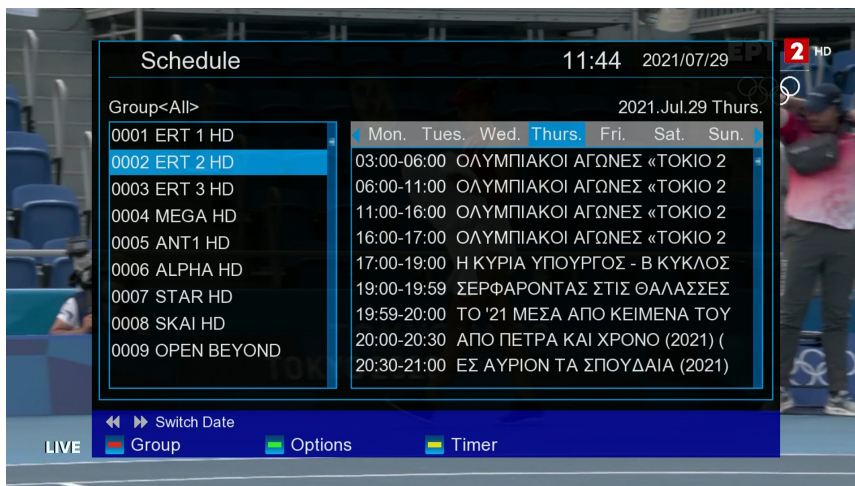
the bottom you will find the current list of programs, in which you can navigate with the up/down arrows and select another channel with the OK button. This list shows, in addition to the channel, the duration and title of the show. Press the OK button (as appropriate several times) and detailed broadcast information will be displayed, if available.



In the “More” mode, information about the program is displayed in the form of a table and in chronological order. Use the left/right arrows to navigate through the schedule information of a channel, use the up/down arrows to move the cursor through the channel list. If necessary, you must press the OK button if you have selected another channel and want the accompanying program information to be displayed.

If the cursor is on the right side of a program title, you can press the OK button to display detailed information about that show (if available).

In the “Schedule” mode, the current program list is displayed on the left, and on the right, the information about the program, in the form of a table and per week. Navigate left/right between the channel list and the summary by day of the week, while with the Page keys +/- you can navigate through the days of the week, with the up/down arrows navigate through the respective list in the corresponding direction. If the cursor is in the right column on a program title, you can press the OK button to display more information about that show (if available).



In all functions you can use the following functions and the following keys:

The red button displays a summary of the existing channel lists (groups). Use the arrow keys to navigate through the summary mode and the OK key to specify the channel list that you wish to be used by EDIVISION.

With the green key you can with the up/down arrows and OK button to select at any time between the different ways of presenting EDIVISION.

Use the yellow key to go to the Timer menu to schedule recordings. Use the up/down arrow keys to navigate between menu items.

The following settings can be made in the “Timer” menu:

- Timer number:** By opening the “Timer” menu automatically switches to the next (available) adjustable timer. With the left/right arrows or the OK key and the up/down arrows you can move between the (set) timers.
- Selection:** Specify how the recording works here. You can choose whether the registration will be done once, or whether it will be done on a daily basis, per week or per month.
- Event:** Specify here the type of recording program (TV/radio channel).
- Channel:** Select the channel here.
- Date:** Select the (start) date of the registration here.
- Start Time:** Select here the start time of the recording.
- Duration:** Here you specify the recording duration (recording duration).
- Standby at the end:** Here you can specify whether the receiver will switch to Standby mode after the end of the recording.

The EXIT key exits the timer menu. If you have made changes and you want to save them, confirm your selection with ‘Yes’ in the dialog box that appears.

Note: Can against in case an error message is displayed. This usually happens when you have chosen the wrong time or start date. Check your settings!

Also note that recording is successful only when a suitable USB memory device is connected to the receiver at the scheduled time.

Exit “EDIVISION” by pressing the EXIT key.

► Menu: Program

► Installation

► Channel

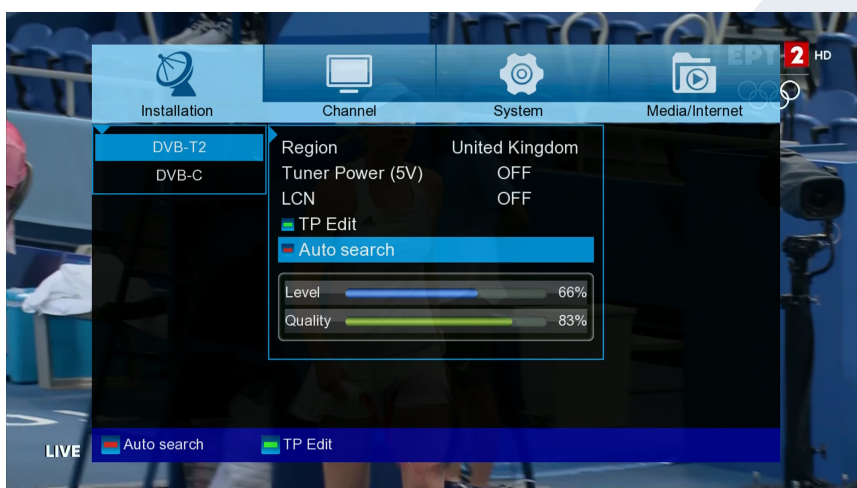
► System

► Media / Internet

► Installation

► Terrestrial Scan DVB-T/T2

► Cable Scan DVB-C



DVB-T/T2

This menu item will come in handy when setting up DVB-T reception. Make sure the antenna is in a good receiving position.

At the bottom you can see the intensity and quality level of the antenna signal. This indication may vary depending on the antenna installation location or the values you select in the menu fields.

Menu functions and settings:

Scan DVB-T2:

Press the OK button here to enter the DVB-T setup menu (see below).

Region:

Select the area here.

Tuner Power 5V:

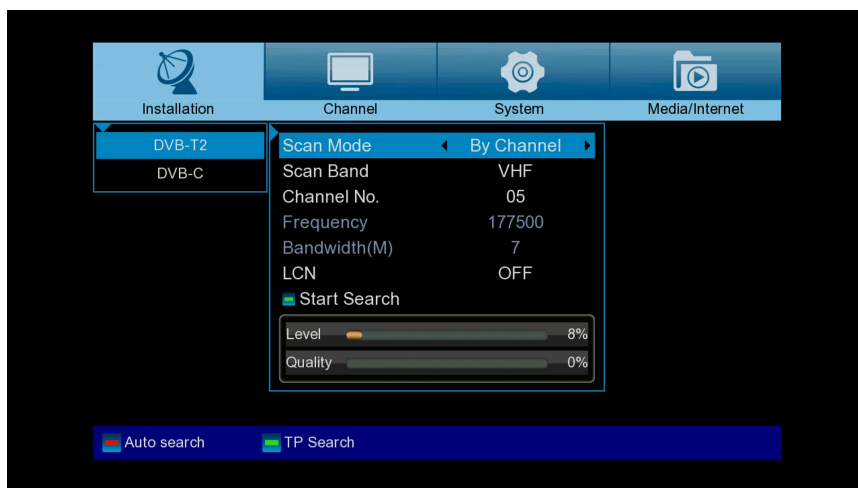
Here you can set additional voltage for DVB-T reception.

LCN:

Here you can choose if you want the channel names to be included in the search.

Red key (Auto search):

In the “**Auto search**” section you can choose between “All” and “Free to Air”. With OK, the automatic channel search starts.



Green key (TP Edit):

If you select “**TP Edit**” (Manual Search) in the next item and press the OK button, the search process starts according to the settings you made.

Exit the “DVB-T2” menu by pressing the **EXIT key**.



DVB-C

TP index:

Set the transmitter here. If you change a value here, other settings (frequency, configuration) are affected under certain conditions.

Frequency:

Here you can enter the frequency with the number buttons.

Symbol Rate:

Here you can enter the Symbol Rate.

NIT Search:

Marking of the network of stations transmitted in the corresponding transmission flow.

Here the search is the option to find an exact station.

QAM:

Here you can choose between QAM16, QAM32, QAM64, QAM128 or QAM256 values.

Green key: Manual search

If you select “**Manual search**” in the next item and press the OK button, the search process starts according to the settings you made.

Red key: Auto search

In the “**Auto search**” section you can choose between “All” and “Free to Air”. With OK, the automatic channel search starts.

Yellow key: DVB-C NID

With “**DVB-C NID**” you can specify the channel search by entering a specific cable TV provider frequency.

► Channel

► Organizing Services

► Organizing Favourites

► Delete All Channels



Organizing Services

In this menu you can configure your channel lists for TV or radio channels.

Notes: Make sure the receiver is in operation. If you want to edit a radio channel, the receiver must be in Radio mode. With the TV/Radio button you can switch from one mode to another.

Basic information:

In the left column of the menu window you will find the list of channels of the current channel list and on the right side the symbols for “Move”, “Lock”, “Delete”, “Rename” and “Skip”.

Menu Features and Settings:

With the **left/right arrows** you can go to the menu window from one column to another, with the **up/down arrows** you move the cursor in each column up or down.

You can select one or more channels in the left column by pressing the **OK button**.

With the **red key** you can display a summary of all channel lists/groups and select accordingly. The type of list you are currently in will be displayed in the title of the window.

The **green key** displays further available options. There are the following possibilities:

- | | |
|----------------|--|
| Select All: | All channels are selected. |
| Unselect All: | All channels are unselected. |
| Select Others: | All channels that were not previously selected are now selected. |
| Select TP: | All channels of a transmitter can be selected. |

How to move a channel:

1. Place the cursor (blue bar) in the channel list on the channel you want to move.
2. Now go to the right side of the menu using the arrow key on the right and navigate the cursor with the up/down arrows to the ‘Move’ symbol. The symbol is highlighted in color.
3. Press the **OK button**.
4. Now use the **up/down arrows** to move the channel through the list. You can also use the Page buttons for this purpose.
5. By pressing the OK button the channel remains in the new position and the “Move” function is terminated.

Note: You can move multiple channels at once by first highlighting the corresponding channels in the channel list (left side menu) via the OK key and then following steps 2-5 above.

How to lock a channel:

1. Place the cursor (blue bar) in the channel list on the channel you want to lock.
2. Now go to the right side of the menu using the arrow key on the right and navigate the cursor with the up/down arrows to the “Lock” symbol. The symbol is highlighted in color.
3. Press the **OK button**. The “ Lock “ symbol will appear behind the channel name in the channel list.

Note: You can lock more channels at the same time by first highlighting the corresponding channels in the channel list (left side menu) via the **OK button** and then following steps 2-3 above.

When selecting a locked channel you are prompted to enter a password. Otherwise the channel is not shown.

How to unlock a channel:

1. Place the cursor (blue bar) in the channel list on the locked channel.
2. Now go to the right side of the menu using the arrow key on the right and navigate the cursor to the “Lock” symbol. The symbol is highlighted in color.
3. Press the OK button. Enter the password you selected, and the channel is unlocked. In the channel list the “Lock” symbol is removed.

Note: You can unlock more channels at the same time by first highlighting the corresponding channels in the channel list (left side menu) via the OK button and then following steps 2-3 above.

How to delete a channel:

1. Place the cursor (blue bar) in the channel list on the channel you want to delete.
2. Now go to the right side of the menu using the arrow key on the right and navigate the cursor to the “Delete” symbol. The symbol is highlighted in color.
3. Press the OK button. The channel is deleted from the list.

Note: You can delete more channels at the same time by first highlighting the corresponding channels in the channel list (left side menu) via the OK key and then following steps 2-3 above.

How to rename a channel:

1. Place the cursor (blue bar) in the channel list on the channel you want to rename.
2. Now go to the right side of the menu using the arrow key on the right and navigate the cursor to the “Rename” symbol. The symbol is highlighted in color.
3. Press the OK button.
4. A window with an input field appears. Use the arrows and the OK key to select characters and letters. You can delete the last character (of your entry) by navigating the cursor, in the field with the letters, in the symbol “<-”. You can add a space by moving the arrows to the “-” symbol. Confirm your selection by going to the “OK” field with the arrows. The new name is added to the channel list. You can leave the input window at any time, using the EXIT key, and thus interrupt the process.

Exit the “Edit Channel” menu by pressing the EXIT key. If you have made changes, a dialog box appears prompting you to confirm the changes. Selecting “Yes” changes the settings.

Note: Only if you confirm with “Yes” are the channels deleted, moved and/or locked. If you select “NO” NO changes are saved.



Organizing Favourites

In this menu you can configure the lists of your favourite TV and radio programs. In the favourites lists you can organize your favourite channels, which you will find very useful.

Basic information:

This menu is structured in three columns. On the left you will find the list of available channels, depending with the summary state you selected. On the right

is the current, selected favourites list. In the middle there are the symbols for 'Add', 'Remove', 'Move' and 'Rename'.

Menu functions and settings:

With the **left/right arrows** you can move from one column to another, with the up/down arrows move the cursor up or down in each list. You can select one or more channels by pressing the **OK button**.

If you are in the left column, you can use the **red key** to display a summary of all lists (except favourite lists) and select, using the arrow keys and the **OK key**, another group/list. You can see which list is currently displayed in the title of the left column.

The **green key** displays further available options. There are the following options:

- Select All: All channels are selected.
- Unselect All: All channels are unselected.
- Select Others: All the channels that were not previously selected are now selected.
- Select TP: All channels of a transmitter can be selected

With the '**yellow**' key you can change your favourites list to view it or edit it. Press the "**yellow**" key to display the summary status with the favourites lists. Use the **up/down arrows** and the **OK key** to select the favourites list you want to edit. This list will appear on the right side of the menu. On the left side are marked with a symbol those channels, which already exist in the selected favourites list

How to add a channel to a favourites list:

1. Place the cursor (yellow bar) in the channel list in the left menu window on the channel you want to add.
2. Now go to the middle column of the menu and navigate the cursor to the "Add" symbol. The symbol is highlighted in color.
3. Press the OK button. The channel will be added to the bottom of the favourites list. On the left side of the menu the channel will be marked with a symbol.

Note: You can add more channels to favourite lists at the same time by first highlighting the corresponding channels in the channel list (left side menu) via the OK button and then following steps 2-3 above.

How to delete a channel from the favourites list:

1. Place the cursor (yellow bar) in the favourites list in the right menu window on the channel you want to remove.
2. Now go to the middle column of the menu and navigate the cursor to the "Delete" symbol. The symbol is highlighted in color.
3. Press the OK button. The channel will be removed from the favourites list. On the left side of the menu the channel is no longer indicated by the relevant symbol.

Note: You can remove more than one favourite channel at a time by first highlighting the corresponding channels in the Favourites list (right menu side) and then following steps 2-3 above.

How to move a channel in the favourites list:

1. Place the cursor (yellow bar) in the favourites list in the right menu window on the channel you want to move.
2. Now go to the middle column of the menu and navigate the cursor to the "Move" symbol. The symbol is highlighted in color.
3. Press the **OK button**.
4. Use the up/down arrows to move the selected channel. The channel is now moving up or down in the list.
5. By pressing the **OK button** the channel remains in the new position and the "Move" function is terminated.

Note: You can move multiple channels at once by first highlighting the corresponding channels in the Favourites list (right menu side) and then following steps 2-5 above.

How to rename a favourites list:

1. Press the "**yellow**" key and select the favourites list you want to rename.
2. Now go to the middle column of the menu and navigate the cursor to the "Rename" symbol. The symbol is highlighted in color.
3. Press the **OK button**.
4. A window with an input field appears. Use the arrows and the OK key to select characters and letters. You can delete the last character (of your entry) by navigating the cursor, in the field with the letters, in the symbol "<-". You can add a space by moving the arrows to the "-" symbol. Confirm your selection by going to the "OK" field with the arrows. You can leave the input window at any time, using the **EXIT key**, and thus interrupt the process.

Exit the "**Edit Favourites**" menu by pressing the **key EXIT**. If you have made changes, a dialog box appears prompting you to confirm the changes. Selecting "Yes" changes the settings saved.

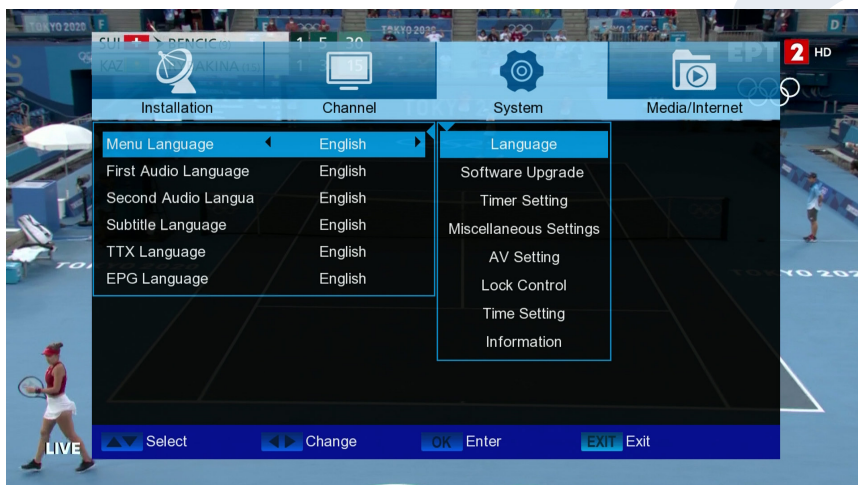
Note: Only if you confirm with 'Yes' are channels deleted, moved and/or added to favourites lists. If you select "NO" NO changes are saved.

Delete all

At this point it is possible to delete all channels (settings). The password is 0000.

► Settings

- Language
- Software Upgrade
- Timer setting
- Miscellaneous Settings
- A/V settings
- Lock Control
- Time Setting
- Information



Language

Menu functions and settings:

Menu language:

Here you select the language in which the menus are displayed.
First audio language: Select the audio language for the first channel here.

Second audio language:

Select the audio language for the second channel here.

EDIVISION:

Specify the language in which the EDIVISION (EDV) online program guide will be displayed (The language must be supported by the program provider).

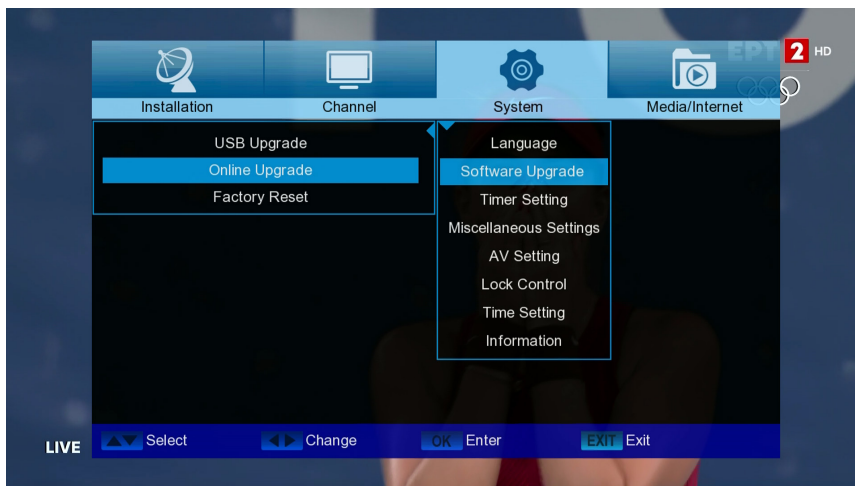
Language subtitles:

Set the language in which the information will be displayed here subtitles (Language should be supported by the program provider).

Teletext:

Set the language in which the Teletext / Videotext information will be displayed here (The language must be supported by the program provider).

Exit the “Language” menu by pressing the **OK button**.



Software upgrade

Basic information:

This menu is only available if a suitable USB memory module, which you recognize from the receiver, is connected. Otherwise you do not have access to this menu.

A further requirement for "USB/HDD Update" is that the corresponding software file is located on the USB memory drive. This file with the ".bin" file extension you can download it from your

internet-connected computer from the website [HYPERLINK "http://www.edision.gr/"](http://www.edision.gr/) <http://www.edision.gr>

Save the file downloaded to your computer to the USB memory stick and insert it into the "picco T265 pro" USB port.

Note: The speed of the update via USB may depend on the organization of the data in the USB memory. It is recommended to pre-format the USB memory via the "HDD formatting" item in the "USB"/"Memory device information" menu (start formatting with the yellow key) and then save the Software (.bin) file to it.

Menu functions and settings:

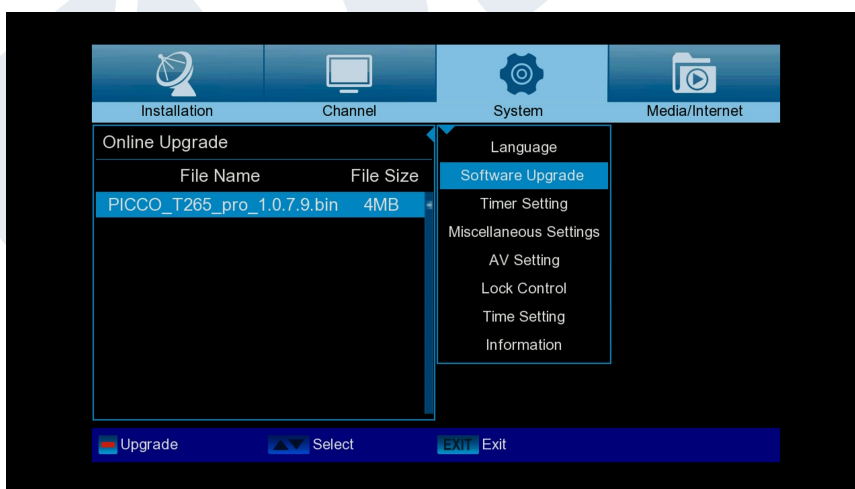
File Path: If the receiver finds files for updating on the USB memory device, it displays them. You can use the arrows and the OK button to select the file that will be updated. If no file is found, 'No File' will appear on the screen.

Section: With the arrows and the OK button here you can set which parts of the software you want to be updated.

Start: Once you have selected the software file and the update mode, navigate with the up/down arrows to the "Start" point. Press the OK button to start the update process.

Caution: The Software upgrade starts immediately with the OK button pressed and may not be interrupted.

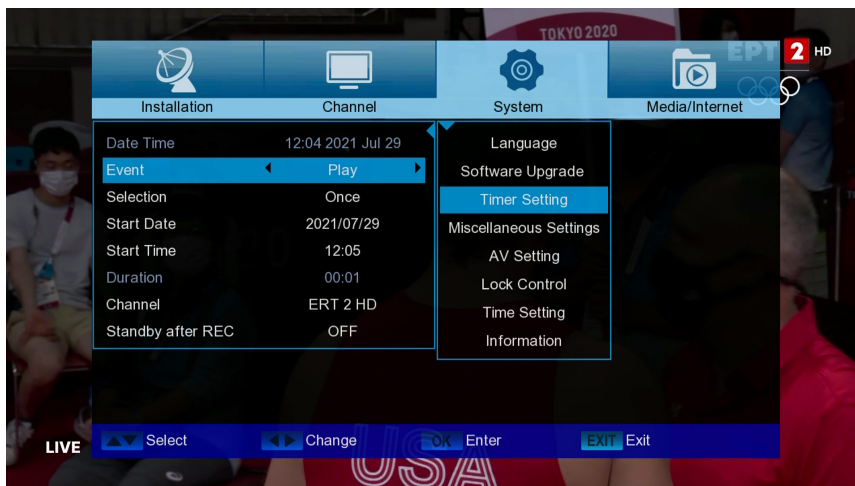
Exit the "USB/HDD Update" menu by pressing the **EXIT** key.



HTTP (Online) Update:

Online Update Mode: Specify at this point which area of the software you want to be updated via HTTP (Online).

You can choose between Software & Loader or Software.



- Selection:** Specify how the recording works here. You can choose if the registration will be done once, or if it will be done on a daily basis, per week or per month.
- Event:** Specify the type of recording program here (TV / radio channel).
- Channel:** Select the channel here.
- Start Date:** Select the (start) date of the registration here.
- Start Time:** Select here the start time of the recording.
- Duration:** Here you specify the recording duration (recording duration).
- REC:** Here you can specify whether the receiver will switch to Standby mode after the end of the recording. **Waiting Stand by after.**



Timer setting

In this menu you can make up to 8 time-supported entries (Timer). You will also find a lot of information in the EDIVISION section.

Menu functions and settings:

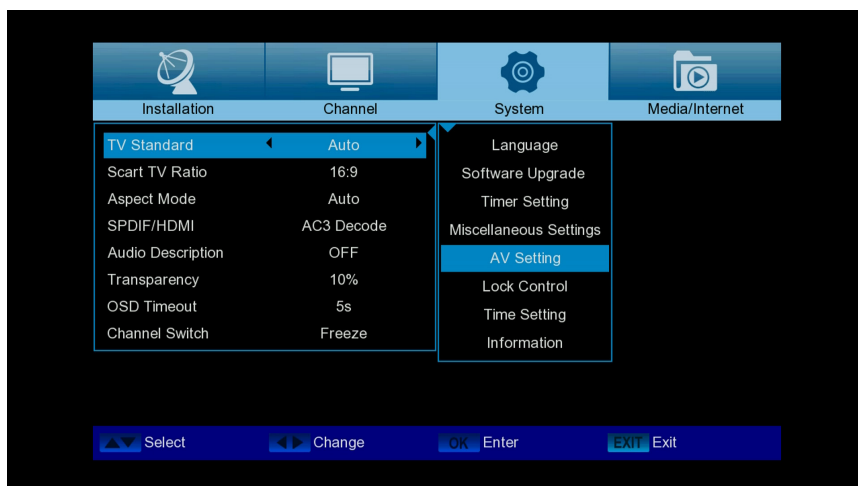
Timer number: Opening the "Timer" menu automatically switches to the next one (available) adjustable timer. You can move between the (set) timers with the left/right arrows or the OK key and the up/down arrows.

Miscellaneous settings

Channel list num: Set channel list number

Subtitle Auto: Here you can set subtitle display options.

0.5 Watt Standby: Setting 'ON' or 'OFF'



AV setting

TV Standard:

The options Auto, 576i, 576p, 720p_50, 720p_60, 1080i_50, 1080i_60, are available, 1080p_50 and 1080p_60.

Scart TV Ratio:

Adjust here the aspect ratio of the image to be displayed (4:3 or 16:9)

Aspect Mode: Choose between (Automatic, 4:3 Letter Box, 4:3 Pan Scan)

SPDIF/HDMI: Here you can adjust the function of the digital Audio output.

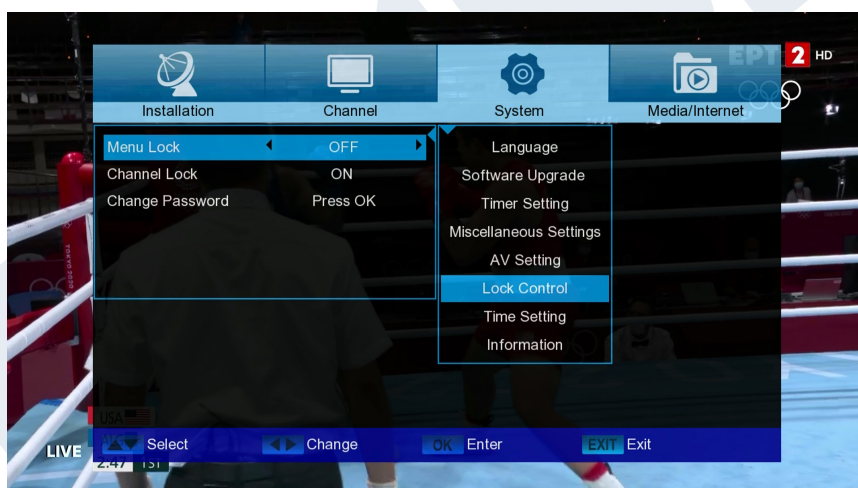
Audio Description: Choose between (ON, OFF)

Transparency: Adjust the transparency of the frame on the screen

OSD Timeout: Set Menu duration from 3 to 10 seconds

Channel Switch: Choose between (Freeze, Black)

Exit the "AV Settings" menu by pressing the **EXIT** key.



Lock Control

This menu is only available after entering a PIN code. The default password (PIN) is: 0000.

Menu Lock:

Here you can choose whether you want to allow or deny access to the menu. If you have selected 'On' at this point, access to the menu is only allowed with enter a PIN code. Excludes channel bar, EDIVISION and favourite lists.

Channel Lock: Here you can specify whether channels can generally be locked or not.

Change Password: Here you can choose a new password.

Password Verification: Repeat the new password here.

Exit the "Minor Protection" menu by pressing the EXIT key.

The EXIT key exits the timer menu. If you have made changes and you want to save them, confirm your selection with 'Yes' in the dialog box that appears.

Note: In some cases it is possible that an error message is displayed. This usually happens when you have chosen the wrong time or start date. Check your settings!

Note: Note that recording is successful only when a suitable USB memory device is connected to the receiver at the scheduled time.



Time setting

Event:

Select "Auto" here and the receiver automatically obtains the current time and date (via signal).

If you select "Manual" here, you can set the date and time yourself at the point below.

Time zone:

This point is only available if you have selected "On" under "User GMT". You can then specify it

here difference between your local time and GMT (Greenwich Mean Time). For Germany/Austria/Switzerland/Luxembourg valid: UTC + 01:00. For Athens/Bucharest/Istanbul valid: UTC + 02:00. Move left/right with the arrows to the value you want to set.

Here you can specify whether daylight saving time will be taken into account.

Daylight time:

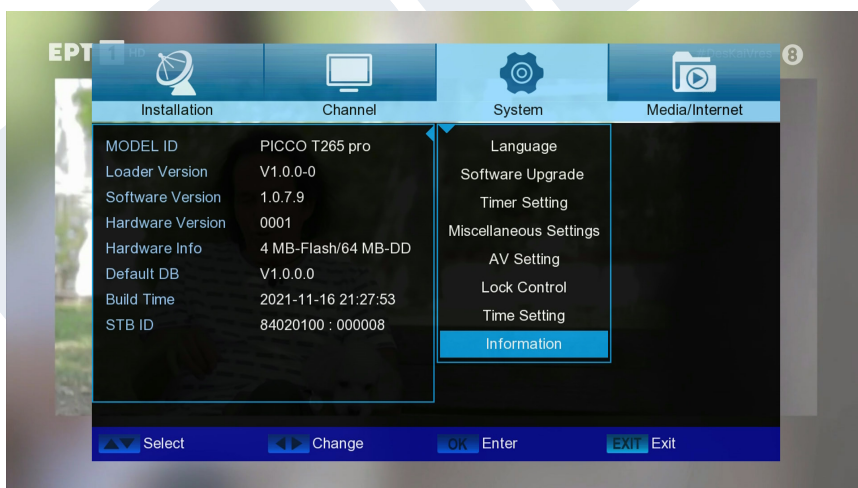
Date:

This point is only available if you have selected "Off" in the "User GMT" point. Enter the date using the number keys.

Time:

This point is only available if you have selected "Off" in the "User GMT" point. Enter the time using the number keys.

Exit the "Time Setting" menu by pressing the EXIT key.



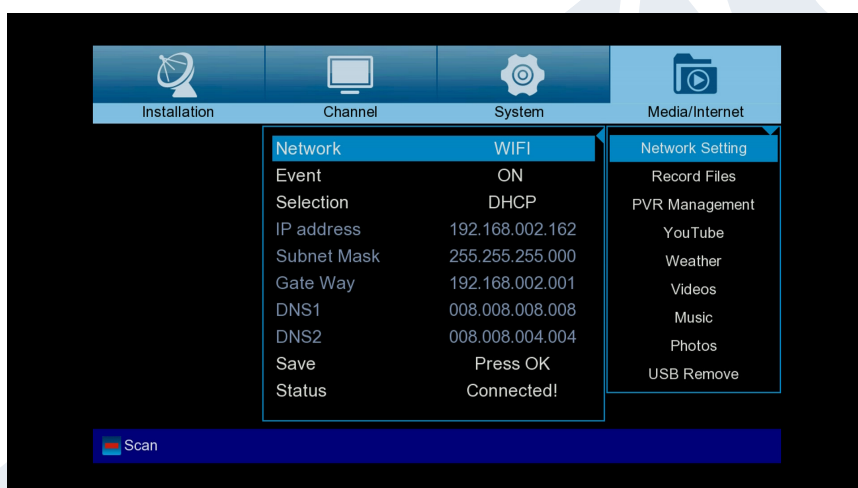
Information

Here you will find information about the device. This information may be helpful when you want to contact the EDISION Technical Department or the point of sale by telephone. Here you also find out about the software version that the receiver has.

Exit the "Information" menu by pressing the EXIT key.

► Media / Internet

- Network setting
- Record Files
- PVR Management
- YouTube
- Weather
- Videos
- Music
- Photos
- USB Remove



Network Setting

Supports USB WiFi & Online Software upgrade

The PICCO T265 pro Terrestrial Digital and Cable Receiver supports USB WiFi for the following internet applications.

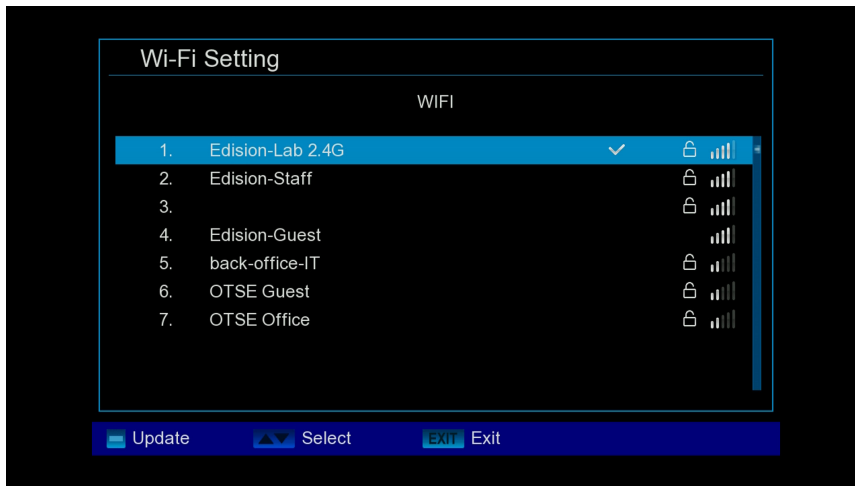
* The connection is achieved with an optional USB WiFi dongle (07-02-0002 WiFi EDI-Mega).

Advantages:

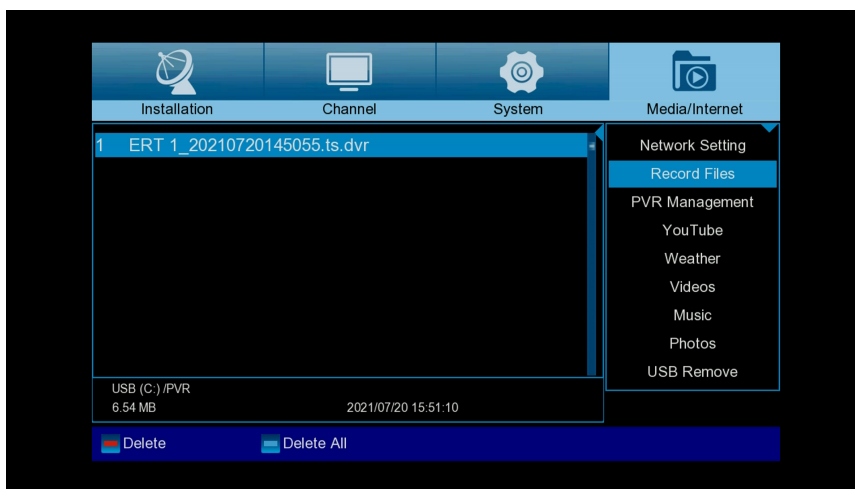
- Supports USB WiFi for Internet applications * such as YouTube,

Weather and online HTTP Software Upgrade.

Step 1. Menu -> Media/Internet-> Network Setting -> Network -> WIFI -> Scan (red button)



Step 2. Select SSID and set the WiFi password



Record Files

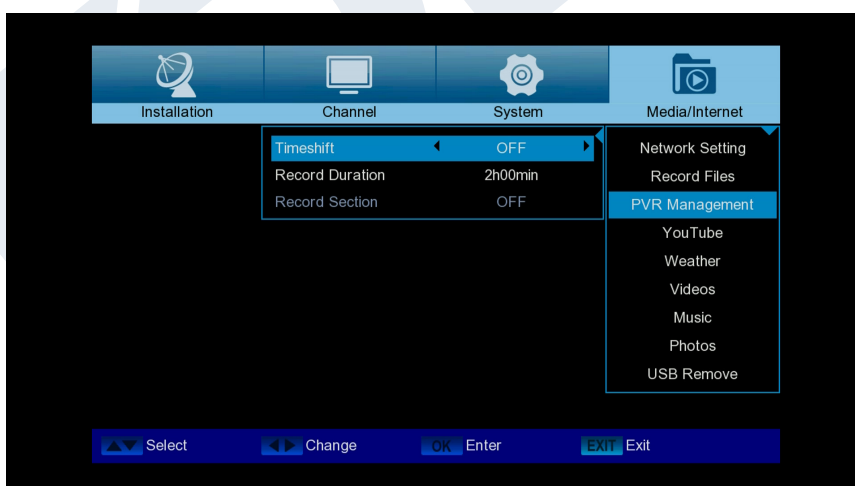
Basic information: This menu is only available if you have connected a suitable USB data storage device recognized by the receiver. Otherwise you will not have access to this menu.

Menu functions and settings:

File Backup: Specify the file name for the backup here. Press the button

OK to display a letter and number field, and use the arrow buttons and the OK button to specify the name of the backup

file. Delete the last character using the arrow keys to scroll to the <- 'area in the letter field and press the OK key. Confirm your entry by going to the OK field and pressing the button "OK" on the remote control. You can exit the input window with the EXIT key.



PVR Management

Note: The A specific menu item is available if a USB memory device with a recording speed greater than 25M Bit/min is recognized, which is recognized by the receiver. In addition, this menu item is locked if one or more entries are made.

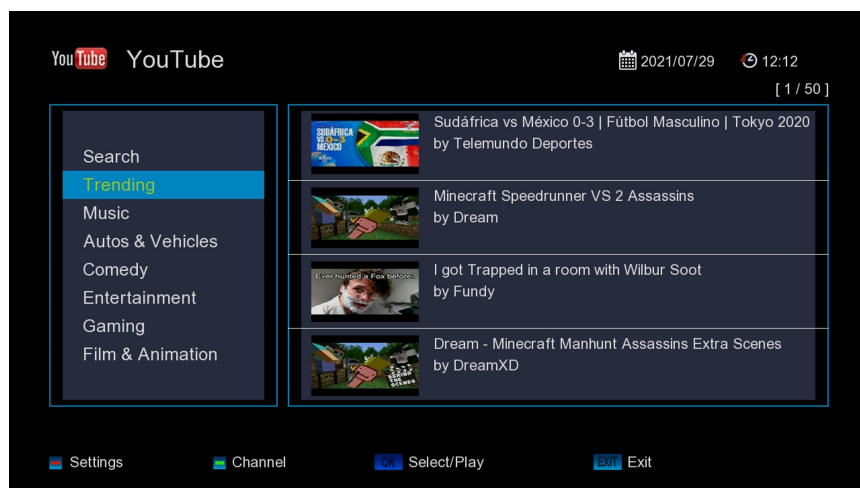
Menu functions and settings:

Timeshift: Here you can enable/disable the feature

Record Duration: Here you can select the recording duration

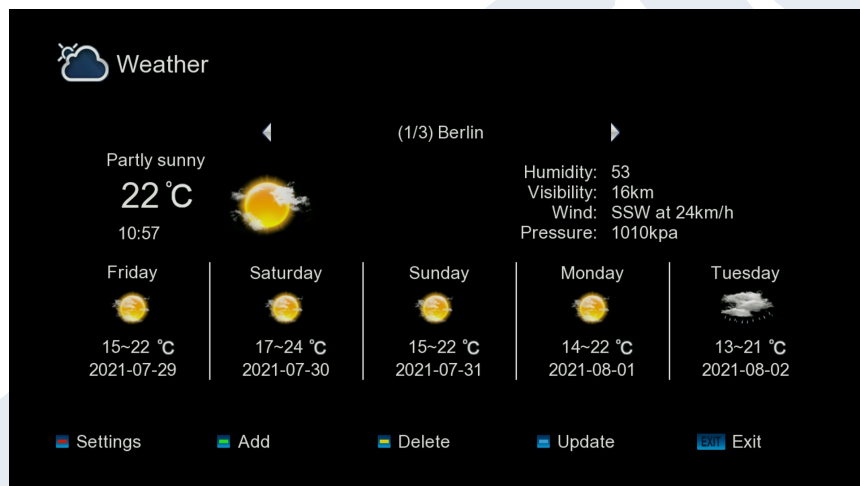
Record Section: Choose between (ON, OFF)

Exit the “PVR Settings” menu by pressing the EXIT key.



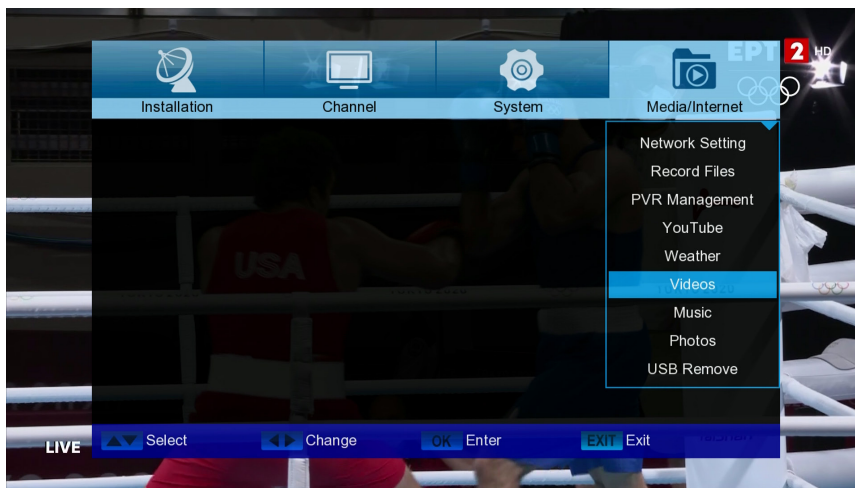
YouTube

Access your favorite YouTube videos



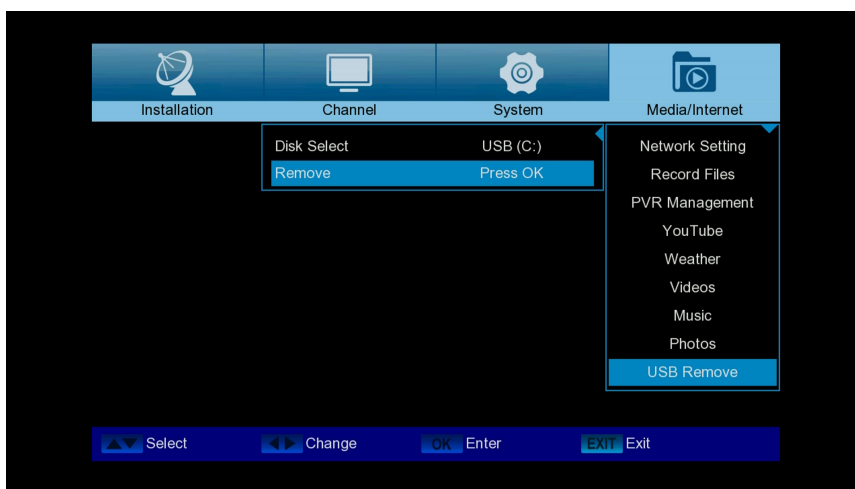
Weather

Weather information, through the menu of your favorite EDISION receiver. With the green key you can add a city.



Videos, Music, Photos

Use the arrow keys to select between "Videos" mode "Music" "Photos" In these functions, you can play photos, videos and audio files via USB stic



USB Remove

Safely remove the USB device



EDISION®
www.edision.gr

EDISION HELLAS LTD • FARMAKEIKA - 57001 N. RISIO • THESSALONIKI - GREECE

