

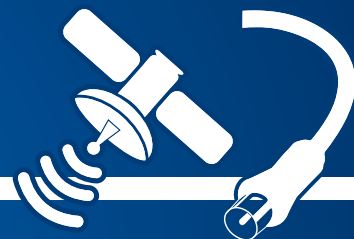
EDISION®

OS mega

Full HD Linux Combo Receiver



Quick Guide



DVB S2
DVB S2
+

DVB S2/T2/C

H.265
HEVC



EDISION OS mega DVB-S2 + DVB-S2 + DVB-S2/T2/C

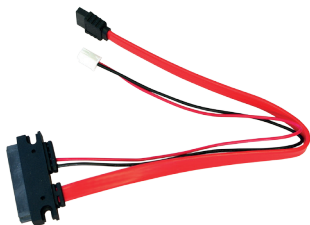
- MPEG-4, H.265 HEVC & MPEG-2 Compliant
- Linux Operating System
- Broadcom 1600 MHz Mips processor(BCM 73565)
- 512MB NAND Flash / 4MB SPI Flash / 1GB DDR3 RAM
- HEVC H.265 Hardware Decoding
- OpenGL ES 2.0 Hardware 3D Graphics
- Blindscan
- 2 x DVB-S2 Tuner
- 1 x DVB-S2/T2/C Tuner
- VFD Display 12dig
- 2.5" SATA3 internal Interface
- eSATA external Interface
- 3x USB 2.0 Port (1x Front & 2x Rear)
- Smart Card Interface
- Common Interface
- HDMI 1.4
- S/PDIF & CVBS Output
- 1 x RS 232 connection
- Cooling fan with adjustable speed (rear view)
- Built-in 802.11n Wi-Fi / Bluetooth Combo Network Module
- Solid 10/100/1000 Mbps Ethernet Network Interface
- Full HD Set-top Box and Multimedia Player
- Live Streaming through the Home Network
- Unlimited Channel Memory
- Super Sensitive Tuners
- Web Browsing and supports HbbTV
- Expandable Add-Ons and Plug-Ins
- Free Internet Streaming TV and Radio
- Firmware/ Software Upgrade: Through (Ethernet, USB Memory Stick)
- Multi-Language OSD Menus
- User Friendly EPG (Electronic Program Guide)
- External Power Supply
- Very low standby power consumption (<0.5W)



ACCESSORIES



Please check that the following contents are enclosed :



SATA Cable



Power Supply



Quick Start Guide

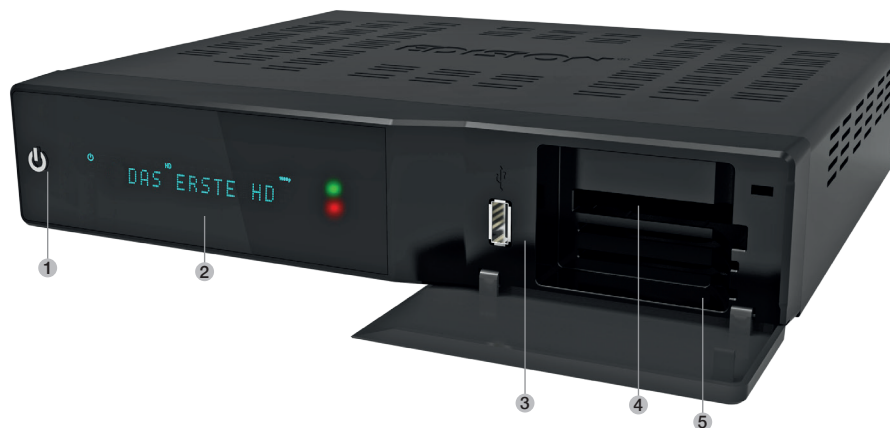
2 BATTERIES



Hdd Screw / Rubber

Remote control unit





Front view:

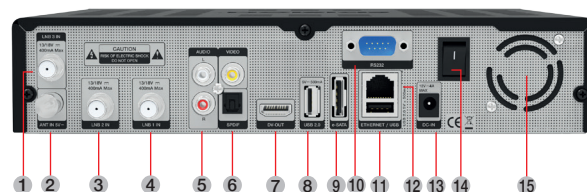
- 1. Power Button Switch between operation and standby modes**
- 2. Display current menu information and channel name etc.**
- 3. USB Connect to the External HDD or USB storage with USB cable. (Max. 500mA)**
- 4. Slot Common Interface**
- 5. Smart card reader. To insert smart card**

EDISION® OS mega

Rear View



1. **LNB3 INPUT** 1st satellite tuner input from the LNB3 on a dish antenna. Turn the receiver OFF first before connecting
2. **DVB-T2 / DVB-C Line IN**
3. **LNB2 INPUT** 1st satellite tuner input from the LNB2 on a dish antenna. Turn the receiver OFF first before connecting
4. **LNB1 INPUT** 1st satellite tuner input from the LNB1 on a dish antenna. Turn the receiver OFF first before connecting
5. **Audio / Video output**, connect to TV with RCA cable.
6. **S/PDIF Line OUT**
7. **DV-OUT**
8. **USB Connect** to the External HDD or USB storage with USB cable (Max. 500mA)
9. **Interface** for connecting external devices with e-SATA.
10. **PC Connection** cable RS232 for software upgrade
11. **USB Connect** to the External HDD or USB storage with USB cable (Max. 500mA)
12. **Ethernet Communication** port via HTTP, FTP, NFS, Telnet and Samba to access your Hard Drive or to upload channel lists. This is also used to update Edision OS mega software.
13. **External Power Supply**
Connect the power Supply (12V / 4A)
14. **Power Switch**. Turn AC Power On/Off
15. **Cooling fan** (optional).



Installation



1. Please refer to the Safety Instruction before powering on the device.
2. Connect Edision OS mega to your TV set using HDMI cable or a RCA cable.



Note

Use an HDMI or Component cable in order to view HD.

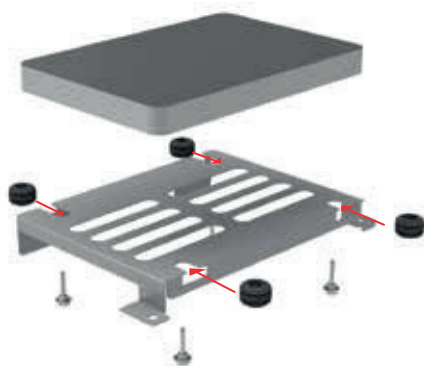


3. Connect the coaxial cable (from the satellite dish) to the LNB INPUT of Edision OS mega, alternatively the aerial cable of your cable network operator or of your DVB T Antenna to the Antenna In Input.
4. Power on the Edision OS mega.
5. After booting up, Initial setup menu comes up for the installation according to your TV settings and Antenna settings.

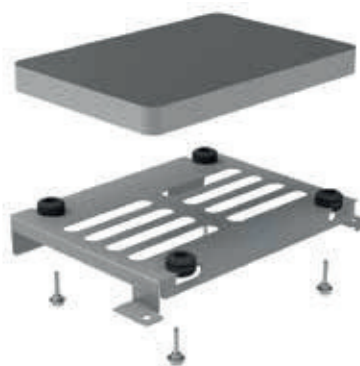
Installation



1



2



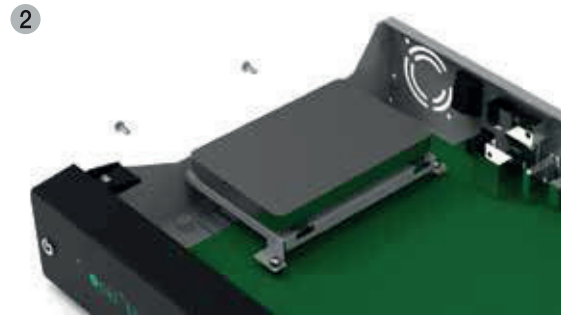
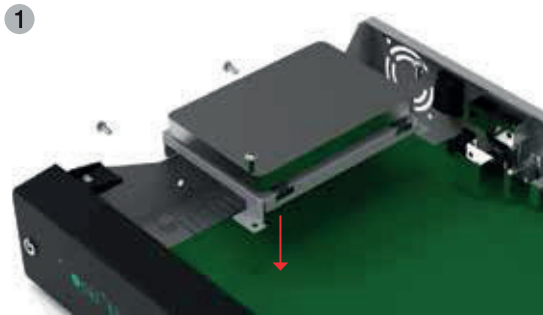
3



4



Installation



REMOTE CONTROL UNIT



Power

Switches between operation and standby



< (PREV)

Return to the previous channel/service or move to the end of the Service List or the Play List



Help

This provides users with a quick guide of using Edision OS mega



Menu

Open main menu & select sub menu using by navigation buttons



EXIT

Close and return to the previous menu and screen



RADIO - TV

Switch to TV mode.
Switch to Radio mode



COLOR BUTTONS

Activates certain menu functions.
Usage instructions are shown in each OSD menu



Audio

Select an audio track and a sound mode



PLAY

Starts timeshift if available



REC

Activates immediately recording-option



NUMERIC KEY (0-9)

Control the numerical operation and change the Channel/Service number directly



> (NEXT)

Go to the next channel/service or move to the beginning of the Service List or the Play List



TIMER

Start timer function



INFO

Displays the Electronic Program Guide (EPG) information if provided



EPG

Displays the Electronic Program Guide (EPG) information if provided



Mute

Mutes or unmutes the audio temporarily



TEXT

Switch between the teletext and TV modes



SUBTITLE

Display the subtitle language list

SAFETY INSTRUCTIONS



Please read the safety instructions carefully before using the Edision OS mega. The manufacturer takes no responsibility for incorrect handling of the Edision OS mega.

- * For sufficient ventilation, leave enough space.
- * If unused for a prolonged amount of time, turn the power OFF.
- * Do not cover the Edision OS mega ventilation openings with items such as newspapers, tablecloths, curtains etc.
- * Do not expose the Edision OS mega to liquid, moisture, direct sunlight and extreme weather.
- * Do not place open flame sources, such as lighted candles, near or on the Edision OS mega.
- * Do not place any containers with liquid, such as vases, on the Edision OS mega.

- * Do not connect or modify cables while the Edision OS mega is connected to the power.
- * Do not remove the cover. Risk of electric shock!
- * Do not touch the Edision OS mega with wet hands. Risk of electric shock!
- * Do not put any metal items into the slots or ventilation openings.
- * Please disconnect your Edision OS mega from the main power during thunder or heavy storms.
- * Disconnect the main power cable if the power cord is damaged.
- * Cleaning: Disconnect the main power cord before cleaning the cover. Use a slightly damp cloth without cleaning agents.
- * Connect the Edision OS mega only to suitable sockets. Do not allow overloads to occur.

! WARNING!

- * Modifications and changes to the Edision OS mega lead to loss of warranty
- * Incorrect software installation leads to loss of warranty.
- * This instruction might be modified without prior notice.

DISPOSAL INSTRUCTIONS



1. When this crossed-out wheeled bin symbol is attached to a product it means the product is covered by the European Directive 2002/96/EC.
2. All electrical and electronic products should be disposed of separately from the municipal waste stream via designated collection facilities appointed by the government or the local authorities.
3. The correct disposal of your old appliance will help prevent potential negative consequences for the environment and human health.
4. For more detailed information about disposal of your old appliance, please contact your city office, waste disposal service or the shop where you purchased the product.

Firmware EDISION OS MEGA (Ver. 4.8.0)

Copyright (C) 1989, 1991 Free Software Foundation, Inc.

This program is free software; you can redistribute it and/or modify it under the terms of the GNU General Public License as published by the Free Software Foundation; either version 2 of the License, or (at your option) any later version. This program is distributed in the hope that it will be useful, but WITHOUT ANY WARRANTY; without even the implied warranty of MERCHANTABILITY or FITNESS FOR A PARTICULAR PURPOSE. See the GNU General Public License for more details. You should have received a copy of the GNU General Public License along with this program; if not, write to the Free Software Foundation, Inc., 51 Franklin St, Fifth Floor, Boston, MA 02110, USA

EDISION®

www.edision.gr

