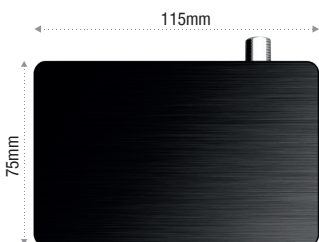


Congratulations on purchasing an EDISON progressive HD c+

Please note that this information is valid at the time of publication.

Current information and detailed user manuals can be found on the Internet at: www.edision.gr

1 Unpacking



Receiver progressive HD c+

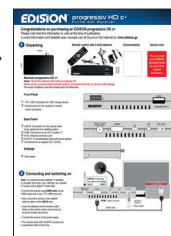
Notes: The front is factory fitted with a protective foil which can be removed easily and with caution. (Protective foil only for devices with display)

The scope of delivery may also include parts not listed here

Remote control with 2 AAA batteries



Documentation



Service note

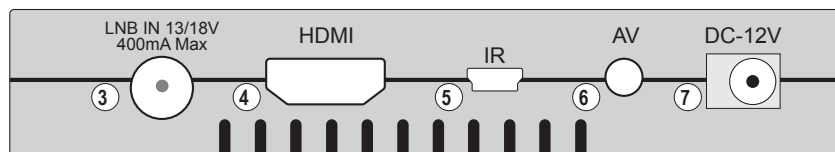
Please contact your EDISON specialist dealer for any further support and service.

Front Panel



- ① USB: Connection for USB1 storage devices
- ② Infrared sensor for the reception of remote control commands

Back Panel



- ③ LNB IN: Connection for the coaxial cable to the signal from the satellite system
- ④ HDMI: Connection to an HDTV quality TV
- ⑤ IR IN: Infrared connection port
- ⑥ AV OUT: For broadcasting video and sound signals
- ⑦ Connection for an adapter (DC 12V/2A)

Subpage

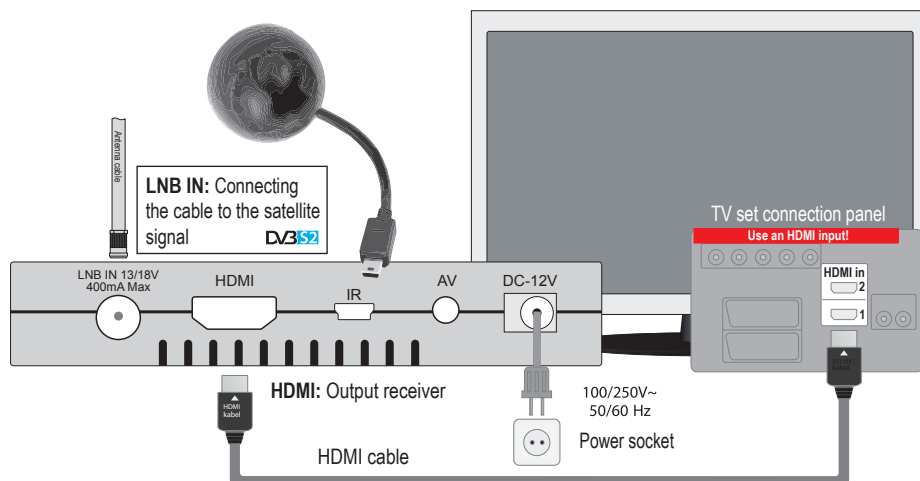


- ⑧ Card reader

2 Connecting and switching on

Note: For interference-free satellite TV reception, a specialist technician must calibrate your satellite TV system with a digital TV level meter

- Connect the receiver using **HDMI cable** via the HDMI output port to your TV's HDMI input port
- Now connect the receiver to the satellite antenna cable via the **LNB IN** input.
- Insert the batteries into the remote control. Notes on the remote control can be found on the back of these instructions.
- Connect the receiver to the power supply.
- The receiver starts with the BOOT process and is operational within a short time



3 Remote control

Notes: Many of the listed buttons have multiple functions, which, are displayed in the menus. Some buttons and functions are optional. Important functions and buttons are briefly explained below. The buttons to be used are marked in red in the diagrams.

You are watching a channel, but now want to switch to another channel
» **How to switch between channels**



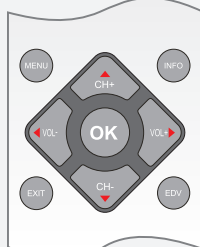
Option 1

Use the up-down arrow buttons while watching television to select another channel.



Option 2

Enter, via the number buttons, the number of the channel that you want displayed. Enter the number 0 via the ZOOM button.



Option 3

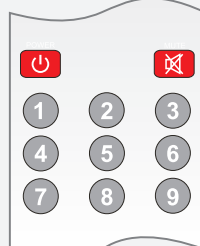
Call up the channel list via the OK button. Use the arrow buttons to navigate to the channel you want to select. Press the OK button to select the channel.

You are watching a TV program or listening to a radio program and now want to change the volume » **How to change the volume on the receiver**



Option 1

In TV or Radio mode, press the right arrow key to increase the volume. Press the left arrow key to decrease the volume.



Option 2

Press the MUTE button in TV or Radio mode to switch off the sound completely. Repeated pressing of the MUTE button switches the sound back on.

» **How to use the main menu**



Press the MENU button to call up the main menu. Use the arrow buttons to navigate between the menu items and the OK button for selecting. Press the EXIT button to exit the menu structure.

The channel list displays all the installed channels
» **How to use the channel list**



Press the OK button in TV or Radio mode to call up the channel list. Use the arrow buttons and OK button to navigate the menu. The EXIT button closes the list.



Use the Page button in the right column of the menu to scroll page by page through the channel lists. The INFO button displays information about a channel. The FIND button searches for channels.



POWER
On/Off button.

MUTE
Mute On/Off.

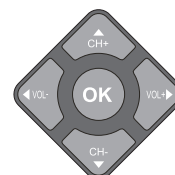
1 ... **0**
Selection of TV/Radio program. Input of numbers or letters in the menus.

TV/RADIO
Toggles between TV and Radio mode.

RECALL
Returns to the previous program.

MENU
Displays the main menu.

INFO
Displays the information bar.



Use the arrow buttons to scroll up in lists. Below, scroll left or right or change the volume. Confirm the menu inputs with the OK button or call up the channel list.

EXIT
Exits a Menu/Dialogue window

EDV
Selection of the electronic program guide EDIVISION.

FIND
To search for programs in lists.

FILE
Displays a file list.

PAGE
Scrolls up (+) or down (-) in lists of channel lists.

FAV
Displays the favourite lists.

SAT
Displays the satellite lists.

V.FORMAT
Changes the screen TV standard.

FF
Allows fast backward.

FF
Allows fast forward.

REC
Skips to the beginning or previous Recording/Image.
REC
Skips to the beginning or previous Recording/Image.

REC
Starts recording manually.

PAUSE
Starts Playback/Pauses playback.

FINISH
Finishes TimeShift, a recording or a playback.

AUDIO
Calls up the Audio menu.

OPTION
Option button.

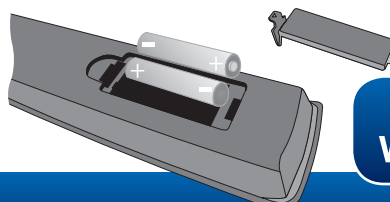
TXT
Calls up the Subtitle/Teletext menu.

WebTV
Web TV button.

More information can be found on the Internet.

Insert/replace batteries in(to) the remote control

When inserting the batteries (2XAAA), observe the correct polarity. When the remote control is not in use for a long period of time, please remove the batteries to avoid possible damage to the remote control. If the batteries are dead, dispose of them properly and in an environmentally friendly manner, and not with household waste.



Visit us on:
www.edision.gr