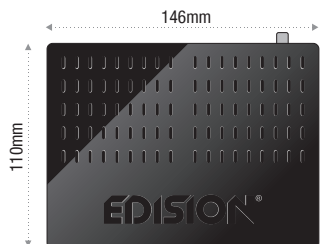


Congratulations on purchasing an EDISION progressiv hybrid lite LED

Please note that this information is valid at the time of publication.

Current information and detailed user manuals can be found on the Internet at: www.edision.gr

1 Unpacking



Remote control with 2 AAA batteries



Documentation



Service note

Please contact your EDISION specialist dealer for any further support and service.

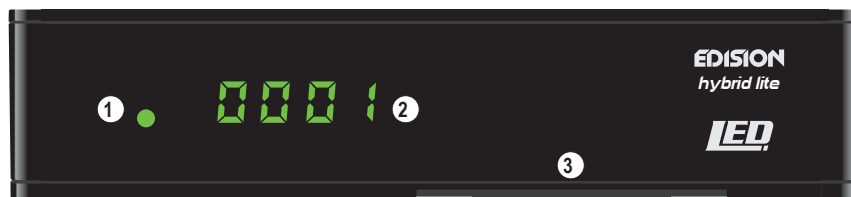
Receiver progressiv hybrid lite LED

Notes: The front is factory fitted with a protective foil which can be removed easily and with caution. (Protective foil only for devices with display)

The scope of delivery may also include parts not listed here

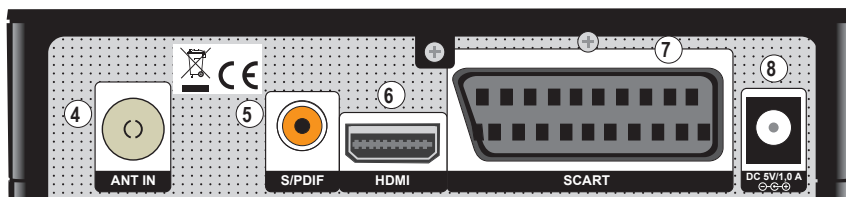
Front Panel

- ① Infrared sensor for the reception of remote control commands
- ② Display LED, displays current information
- ③ Card reader



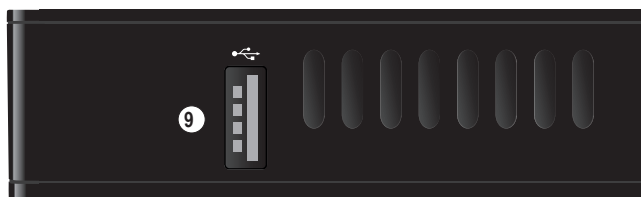
Back Panel

- ④ ANT IN: Input for connecting the signal from the antenna
- ⑤ S/PDIF: Audio interface for amplifier/audio console
- ⑥ HDMI: Connection to an HDTV quality TV
- ⑦ SCART: For connecting to a TV set, using SCART cable [not for HD TV]
- ⑧ Connection for an adapter (DC 5V / 1,0A)



Subpage

- ⑨ USB: Connection for USB storage devices

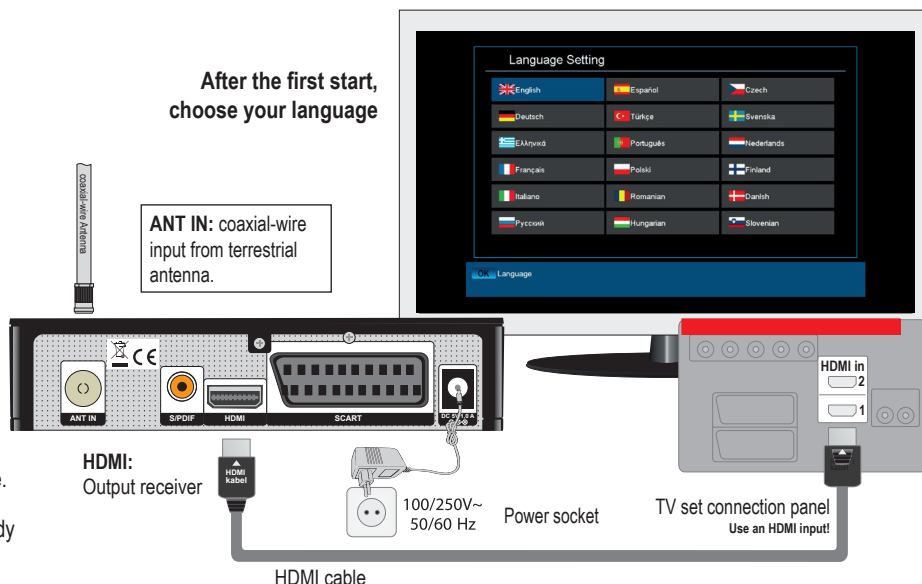


2 Connecting and switching on

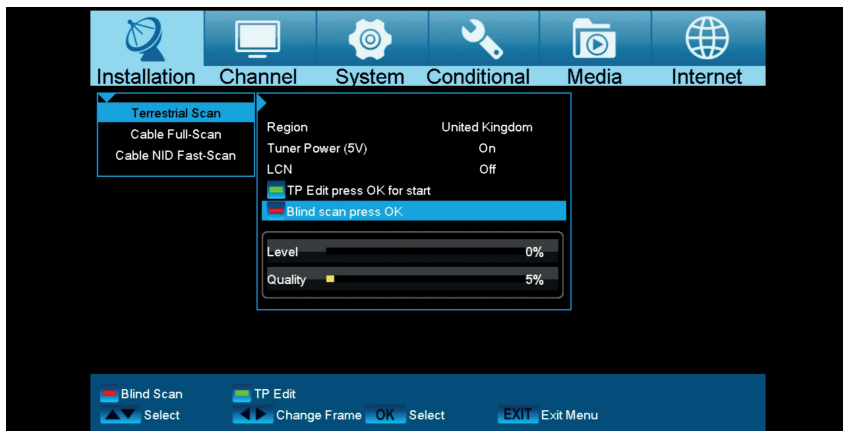
Note: For trouble-free signal reception your antenna and cable installation should be calibrated and inspected by a qualified professional with a digital TV-level-measuring instrument.

- Connect the receiver's **HDMI-output** to the HDMI-input of your television set (TV), for HDTV quality.
- Then connect the coaxial cable from the terrestrial antenna to the **ANT IN** input of the receiver.
- Insert the batteries into the remote.
- Further information you will find at the back of this instruction manual.
- Connect the receiver to the mains power supply network, by means of its power supply unit included in the package.
- The receiver starts with the BOOT-process and will be ready for you to enjoy in a few minutes.

After the first start, choose your language

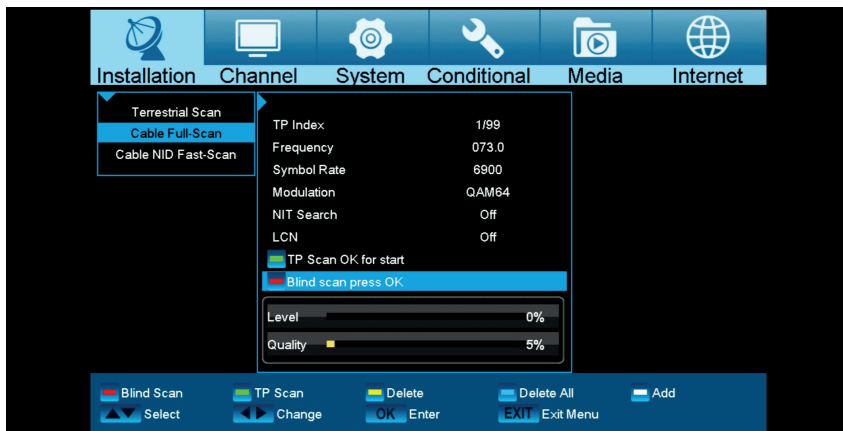


3 Installation



Terrestrial Scan

After you have connected the antenna cable to the receiver and have sufficient signal level, select the «Blind scan press OK» button and press the «OK» button or the red button on your remote control to search for digital terrestrial (DVB-T / T2) channels. If you want a manual search, select «TP Edit press OK for start» with «OK» and then press the «OK» button or the green button on your remote control to confirm. Select the «CH. No.» (TP) channel and then «Start Search» with the «OK» or the green button.



Cable Full-Scan

After you have connected the antenna cable to the receiver and have sufficient signal level, select the «Blind scan press OK» and press «OK» or the red button on your remote control to search for all available digital cable programs (DVB- C) Info: This process can take up to 20 minutes depending on the cable provider!



Cable NID Fast-Scan (Cable Provider NID Scan)

After you have connected the antenna cable to the receiver and have sufficient signal level, select the «Provider» and «Provider name» (for example, KD Muenchen) from the list. Then go to «Start search» and press «OK» or the green button on your remote control, then the programs of your cable provider should appear in a few seconds. If your provider is not in the list, please contact your cable provider directly and ask for your 5-digit network ID (e.g., NID 11111). Then enter your NID and press «Start Search» or the green key.

4 Remote Control Unit

Note: Many of the listed keys have multiple functions which are shown upon menu display. Some keys and functions refer to optional features.

Important features and keys are explained in the functions below. The respective keys are in red on the graphs.



POWER Receiver On/off.

MUTE Sound volume mute on/of.

1...0% For TV/Radio station selection, manual enter of numbers and letters in the menus.

TV/RADIO Switches from tv to radio and vice versa.

RECALL Returns to previous channel.

MENU Displays the main menu.

INFO Displays the information bar.

With the arrow keys you can scroll in the lists up and down, left and right or regulate the volume. With the OK-key you confirm your menu-entry or activate the channel-list.

EXIT Stops a menu/pop-up window.

EDIT Selection of the electronic programm-support EDIVISION.

FIND for searching for programmes in lists.

FILE Displays a file-list.

PAGE Scrolls in lists channel-list forward or backwards.

FAV Displays the favourite-lists.

SAT Displays the lists of satellites.

VFORMAT Changes the display TV standard.

Fast Rewind Enables fast rewind.

Fast Forward Enables fast forward.

Return to Start Returns to the start, alternatively to the previous recording.

Switch to End Switches to the end, alternatively to the next recording.

REC Manual recording start.

Play start/pause.

Stops timeshift, recording or playing.

AUDIO Activates the audio-menu.

OPTION Option button. Switching between TV/AV mode (Not in HDMI mode).

TEXT Activates the menu "Subtitle/teletext".

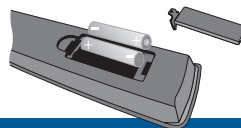
WebTV Web TV key.



Inserting batteries into the remote control

Pay attention to the correct polarity while inserting the batteries (2XAAA).

If the remote is not to be used for extended period of time please remove the batteries to avoid potential damage to the remote. Dispose of the batteries properly according to recycle procedures.



For further information, please visit our website:

www.edision.gr