

EDISION[®] argus vip3 Magicvision

Congratulations on your choice of EDISION agrus vip3 Magicvision receiver.

Please note that all the information included in this leaflet are valid at the date of printing the document.

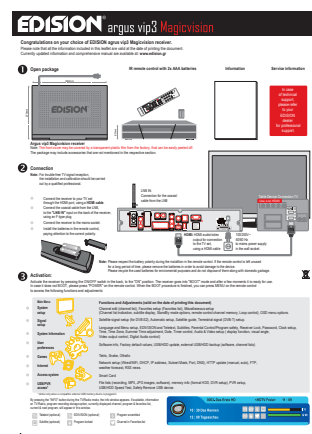
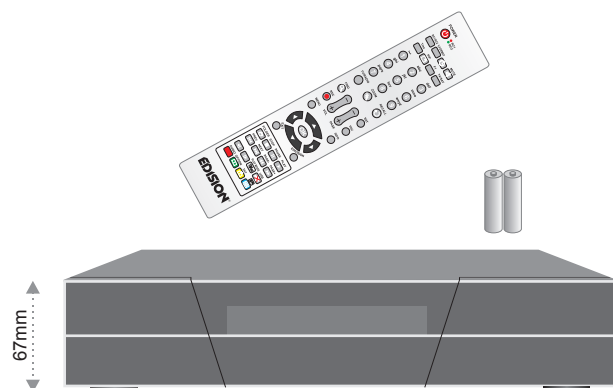
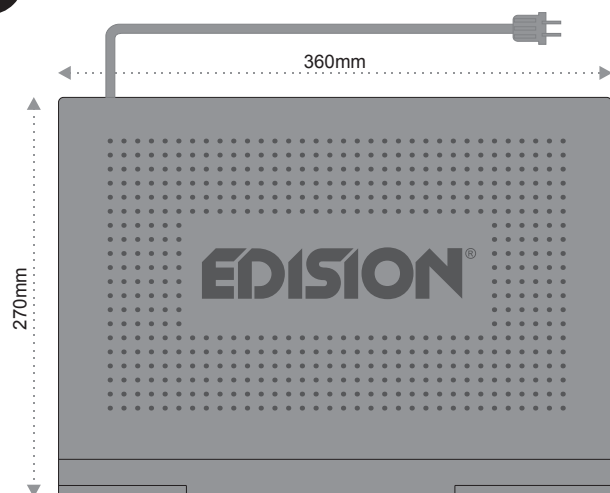
Currently updated information and comprehensive manual are available at: www.edision.gr

1 Open package

IR remote control with 2x AAA batteries

Information

Service information



In case of technical support, please refer to your EDISION dealer for professional support.

Argus vip3 Magicvision receiver

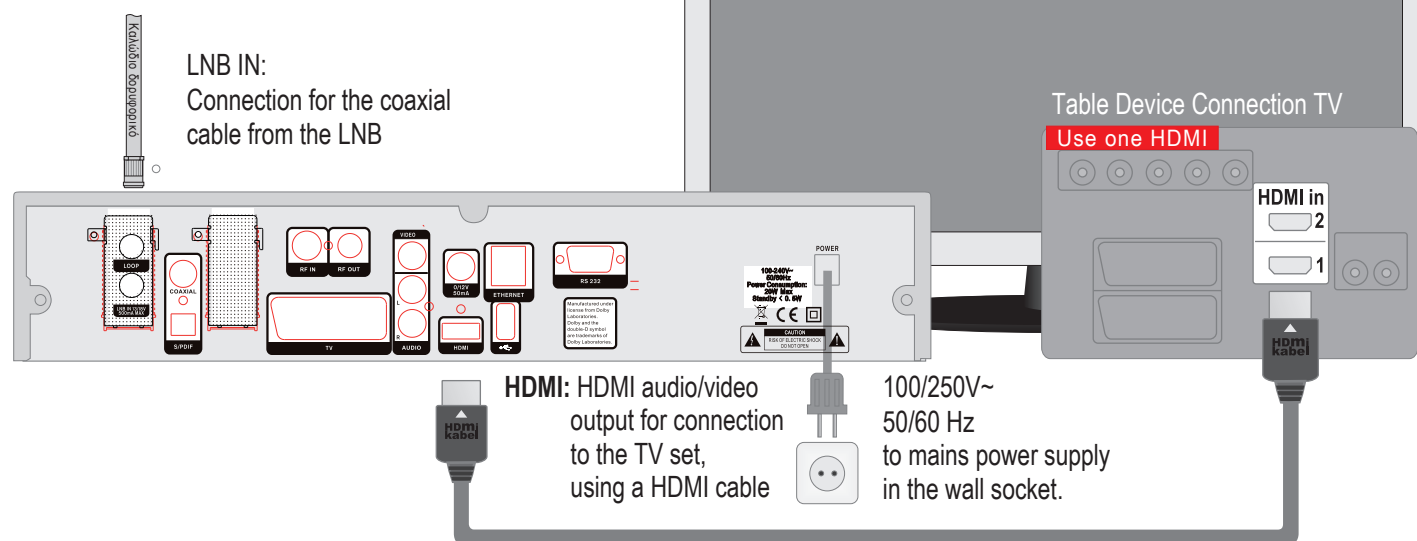
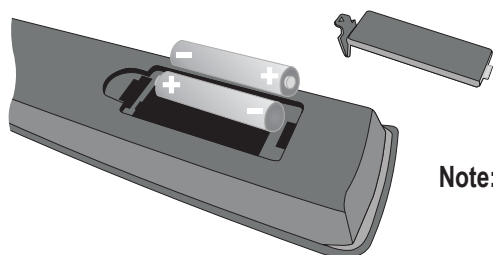
Note: The front cover may be covered by a transparent plastic film from the factory, that can be easily peeled off.

The package may include accessories that are not mentioned in the respective section.

2 Connection

Note: For trouble-free TV signal reception, the installation and calibration should be carried out by a qualified professional.

- Connect the receiver to your TV set through the HDMI port, using a **HDMI cable**.
- Connect the coaxial cable from the LNB, to the **"LNB IN"** input on the back of the receiver, using an F-type plug
- Connect the receiver to the mains socket.
- Install the batteries in the remote control, paying attention to the correct polarity.



Note: Please respect the battery polarity during the installtion in the remote control. If the remote control is left unused for a long period of time, please remove the batteries in order to avoid damage to the device. Please recycle the used batteries for enviromental purposes and do not dispose of them along with domestic garbage.

3 Activation:

Activate the receiver by pressing the ON/OFF switch in the back, to the "ON" position. The receiver goes into "BOOT" mode and after a few moments it is ready for use. In case it does not BOOT, please press "POWER" on the remote control. When the BOOT procedure is finished, you can press MENU on the remote control to access the following functions and adjustments:

Main Menu:

System setup

Signal setup

System Information

User preferences

Games

Internet

Access system

USB/PVR access*

Functions and Adjustments (valid on the date of printing this document)

Channel edit (channel list), Favorites setup (Favorites list), Miscellaneous setup (Channel list indication, subtitle display, StandBy mode options, remote control channel memory, Loop control), OSD menu options.

Satellite signal setup (for DVB-S2), Automatic setup, Satellite guide, Terrestrial signal (DVB-T) setup.

Language and Menu setup, EDIVISION and Teletext, Subtitles, Parental Control/Program safety, Receiver Lock, Password, Clock setup, Time, Time Zone, Summer Time adjustment, Date, Timer control, Audio & Video setup (display function, visual angle, Video output control, Digital Audio control)

Software info, Factory default values, USB/HDD update, external USB/HDD backup (software, channel lists)

Tetris, Snake, Othello

Network setup (Wired/WiFi, DHCP, IP address, Subnet Mask, Port, DNS), HTTP update (manual, auto), FTP, weather forecast, RSS news.

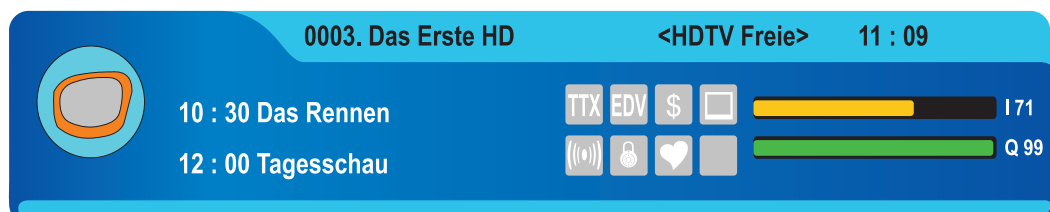
Smart Card

File lists (recording, MP3, JPG images, software), memory info (format HDD, DVR setup), PVR setup, USB/HDD Speed Test, Safely Remove USB device.

* Active only when a compatible external USB memory device is plugged in.

By pressing the "INFO" button during the TV/Radio mode, the info window appears. If available, information on TV/Radio, program recording storage option, currently displayed channel, program & favorites list, current & next program, will appear in this window.

- | | | | | | |
|-----|---------------------|-----|----------------------|----|---------------------------|
| TTX | Teletext (optional) | EDV | EDIVISION (optional) | \$ | Program scrambled |
| | Subtitle (optional) | | Program locked | | Channel in Favorites list |



EDISION[®] argus vip3 Magicvision

Front panel

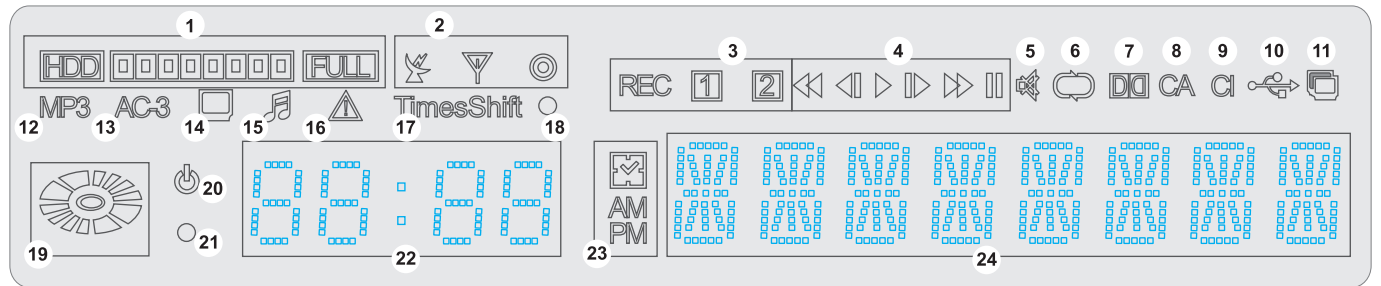


- ① Left/Right buttons: for volume adjustment and/or cursor movement in the menus
- ② Up/Down buttons: for moving in the program lists and/or cursor movement in the menus
- ③ OK button: displays the Program list and/or cursor movement in the menus
- ④ MENU button: Activates/Deactivates the Main Menu window
- ⑤ POWER button: Activates/Deactivates the device

- ⑥ VFD screen: displays the current function information
- ⑦ Embedded Conax card reader
- ⑧ Embedded Conax card reader
- ⑨ USB 2.0 port: for connecting external USB storage devices

VFD screen display points

- ① Displays the memory status of the connected external USB storage device
- ② Displays the DVB (DVB-S/DVB-T) signal status
- ③ Displays record function
- ④ Displays the playback options
- ⑤ "ON" when MUTE is activated
- ⑥ "ON" when continuous playback replay
- ⑦ Optional, "ON" on Dolby Digital Audio function
- ⑧ "ON" when Conax card inserted
- ⑨ "ON" when module plugged in a slot
- ⑩ "ON" when a USB storage device is plugged in
- ⑪ "ON" during PIP function
- ⑫ "ON" during MP3 file playback
- ⑬ "ON" during Dolby Digital Audio function
- ⑭ "ON" when in TV mode
- ⑮ "ON" in Radio mode
- ⑯ "ON" during info displayed on the screen



- ⑰ "ON" when Time Shift function is active
- ⑱ Displays the signal status
- ⑲ "ON" when entering memory for playback or record
- ⑳ "ON" during StandBy mode
- ㉑ Blinks when a remote control command is used
- ㉒ Time display
- ㉓ AM/PM hour display
- ㉔ Program/Menu info display

Remote Control

Note: Some buttons refer to optional functions or have more fuctions, as appear in the respective menus

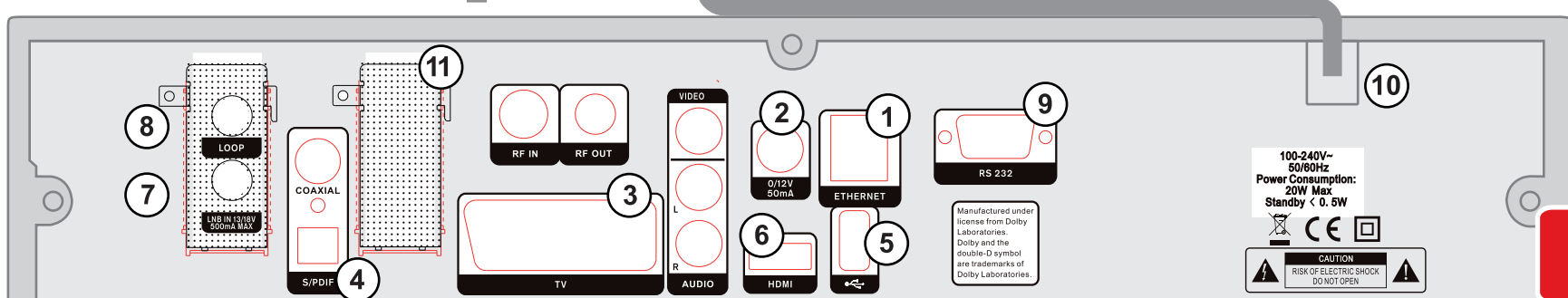
- POWER**
ON/OFF button
- RC1/RC2**
Remote Control frequency choice (remote 1, remote 2)
- V.FORMAT**
TV display format option
Auto StandBy mode Timer
- MUTE**
Sound ON/OFF
- Tms**
Time Shift display
- PIP**
Picture-in-Picture function start (optional)
- F1**
Image save during playback (optional)
- TV/SAT**
TV/AV picture choice (not valid during use of HDMI)
- WXYZ**
Number & letter character use in the Menus, selection of TV/radio programs
TV/RADIO function selection
- ZOOM**
"0" number selection, zoom function (max. 16x)
- RECALL**
Last program recall
- FIND**
Program search in list
- REC**
Manual record

- VOL**
Volume control
- PAGE**
List page scroll
- SAT**
Satellite list display
- FAV**
Favorites list display (if configured)
- MENU**
Main Menu display
- INFO**
Program Info window display
- OK**
Using the arrow buttons you can move in the lists or change the volume level. With "OK" you confirm your choice in the menu or display the program list
- EXIT**
Closes a menu/dialog window
- EDIVISION**
EDIVISION program display
- FOLDER**
Displays a file list (optional)

- STOP**
Time Shift function stop, in record or playback
- PAUSE**
Playback stop
- PLAY**
Playback start for Time Shift function and from a recorded file. Return to normal playback speed.
- PREV**
Go to the beginning or the next recorded event / image
- NEXT**
Go to the end or the next recorded event / image
- PAGE-**
Page scroll back. Also fast rewind
- PAGE+**
Page scroll forward. Also fast forward.
- PLAY MODE**
Moves to playback for MP3 or JPEG player
- USB**
Safely remove USB device
- AUDIO**
Goes to AUDIO menu
- OPTION**
Multiple option button, for channels where available
- TXT**
Moves to Subtitle/Videotext menu
- Multiple image function (optional)**



Rear side



- ① ETHERNET (RJ45): for connection with LAN/INTERNET, for home use
- ② 0/12V 50mA: Voltage supply output for connecting external devices that require power
- ③ TV: for connecting to a TV set, using SCART cable [not for HD TV]
- ④ S/PDIF: Audio interface for amplifier/audio console
- ⑤ / USB: USB port for connecting USB memory devices
- ⑥ HDMI: for connection to a TV set, using HDMI cable. For HD TV signals

- ⑦ LNB IN: for connecting the coaxial cable from the LNB, using the proper plug
- ⑧ LOOP: through connection for signal from another receiver
- ⑨ RS 232: for connecting to a PC, using RS-232 cable, for receiver software update
- ⑩ POWER: ON/OFF of the receiver power supply
- ⑪ Slot for the optional TUNER

For more information, please visit:
www.edision.gr