

EDISION®



picco S2

Full HD Sat Receiver

DVB S2



User's Guide



Contents

► Important safety instructions	4
► Description	7
Switching off.....	7
Language Selection.	8
► Features.....	8
► Information bar (InfoBar).....	9
How to change the time for fading in the information bar:	9
Functions and settings:.....	9
► EDIVISION - Your electronic program guide.....	10
► Program list.....	13
How to change the fading time of the information bar:	13
► Menu program.....	15
Edit channel	15
How to move a channel:	16
How to lock a channel:.....	16
How to unlock a channel:.....	16
How to delete a channel:	16
How to name a channel:	17
Skip channel	17
How to select a channel to be skipped:	17
Edit favourites	18
How to add a channel to a favourite list:.....	19
How to remove a channel from a favourite list:.....	19
How to move a channel in a favourite list:	19
How to name a favourite list:	20
► Menu Conditional.....	21
Other settings	21
► Menu installation	23
Satellite installation	23
Auto installation	25
Satellite guide	25
► Menu system settings	26
Languages	26
Functions and settings in the menu:	26
Minors protection	27
Time setting	27
Timer.....	28
Audio + Video	29
► Menu system.....	30

Information	30
Factory setting	30
▶ Menu/Media/File List.....	31
▶ Menu/Media/Memory Information	32
▶ Menu/Internet/Ethernet Settings	33
▶ Setting up WLAN	34
▶ Menu/Miscellaneous/Software Update	35
Http Upgrade	35
Auto Upgrade.....	35
Update from USB/HDD	35
Backup to USB/HDD.....	36
▶ Menu/Applications.....	37
Weather Forecast	37
RSS Reader.....	38

► Important safety instructions

- 1) Please read these instructions carefully.
- 2) Keep these instructions in a safe place for future reference.
- 3) Pay extra attention to «warning» points.
- 4) Follow all instructions.
- 5) Do not use the device near water.
- 6) Clean with a dry cloth only.
- 7) Do not use near heat sources, such as radiators, heat accumulators, ovens or other devices (including amplifiers) generating heat.
- 8) Only operate this product with the type of power source indicated on the label. If you are unsure about the type of power supply you use at home, ask your electricity supplier. Disconnect the device from the mains before maintenance or installation procedure.
- 9) Protect the mains cable from damage.
- 10) Only use auxiliary devices/accessories specified by the manufacturer.
- 11) Disconnect the device during thunderstorms or extended periods of non-use.
- 12) All maintenance work should be carried out by qualified service personnel. Maintenance is required when the device is damaged in any way, including damage to the mains cable or mains plug. Also in case the device becomes exposed to liquids or moisture, was dropped or does not function properly.
- 13) Make sure that the ventilation slots are always unobstructed.
- 14) Attention should be paid to the environmental aspect of battery disposal.
- 15) Only use the device in moderate climate.

WARNING: In order to avoid the risk of fire or electric shock, do not expose this device to rain or moisture.

WARNING: The batteries should not be exposed to excessive heat and heat sources such as direct sunlight, fire, etc.



This symbol indicates that there is risk of electric shock.



This symbol indicates that the operating instructions contain important operating and maintenance information.



This symbol indicates that the product has a double insulation between voltage and user accessible parts. Only use parts provided by the manufacturer during repair.



This symbol on the product or in the operating instructions indicates that the electrical or electronic device must be disposed of separately from household waste at the end of the service life. Separate collection systems exist for recycling.

For further information, please contact your local authorities or your dealer where you purchased the product.

► Remote control



Power

Switches between operation and standby



Mute

Mutes or unmutes the audio temporarily



PAGE+ / PAGE -

Scrolls in lists channel-list forward or backwards



V. FORMAT

Changes the display TV standard



FIND

For searching for programmes in lists



Menu

Open main menu & select sub menu using by navigation button



INFO

Displays the information bar



EXIT

Stops a menu/pop-up window



EDV

Selection of the electronic programm-support
EDIVISION



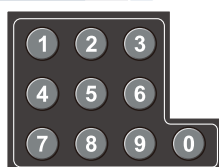
RECALL

Returns to previous channel



TV/RADIO

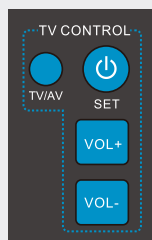
Switch to TV mode. Switch to Radio mode



NUMERIC KEY (0-9)

Control the numerical operation
and change the Channel/Service
number directly

ADJUSTMENT OF TELEVISION FUNCTIONS



Your set-top-box remote control has 4 learning-function keys, in the up right hand side TV keypad panel area. Each one can be used accordingly as the following example:

1. Turning your TV set ON/OFF **[SET]**
2. Increasing/decreasing volume **[VOL+ , VOL-]**
3. Switching between TV/AV mode **[TV/AV]**

The other 39 keys are for the control of the EDIVISION set-top-box.

- Press **[SET]** key in the up right hand side TV keypad panel area continuously for 5 Sec. until the LED lights up and keep lighting, then release the key. This means the remote control is in the learning mode.
- Within 10 seconds, press the key in the original TV IR control, which needs to be learned, for example the **[POWER]** key, then the red LED is flashing. It means this button is ready to receive the learning signal.
- Aim the emission port of the original TV remote control at the front at the emission port at the front of your set-top box remote control (distance between these two ports has to be about 2~3 CM).
- Then press the key which is to be learned in your original TV remote control, for example the **[POWER]** key of your original TV remote control continuously for 3 seconds. If the red LED flashes quickly for three times and keep lighting, it means the set-top box remote control has succeeded in receiving the signal and you have completed the learning procedure of ON/OFF **[TV POWER]** key.
- Then release the **[POWER]** key of your original TV remote control.

If the copying procedure fails , the red LED will blink and stay OFF. In this case please repeat the procedure.

For the next programmable function, please repeat steps 1 to 2:

- Switching between TV/AV mode **[TV/AV]**
- Increasing/decreasing volume **[VOL+ , VOL-]**

Now you can operate your TV with the 4 programmed by you keys of your set-top box remote control.

During the operation, the LED will flash to indicate that the signal is transmitted!



Displays a file-list



Safe USB Removal



REC

Activates immediately recording-option



PLAY/PAUSE

Play start/pause



Stops timeshift, recording or playing



Allows you to set the time
at which the Receiver autom.
switches to standby mode



Activates the audio-menu



Option button. Switching between
TV/AV mode (Not in HDMI mode)




Activates the menu "Subtitle/teletext"

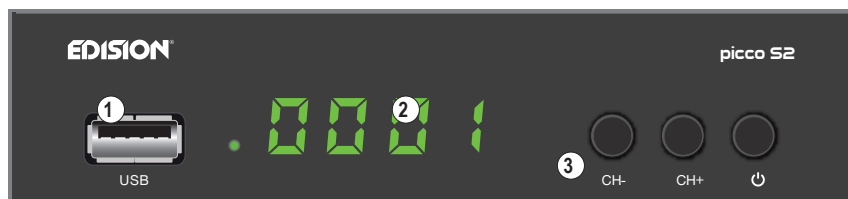


Web TV key

► Description

Front Panel

- ①  / USB: Connection for USB storage devices
- ② Display LED, displays current information
- ③ Infrared sensor for the reception of remote control commands
- ④ CH- / CH+ buttons: for moving in the program lists
- ⑤ POWER button: Activates/Deactivates the device



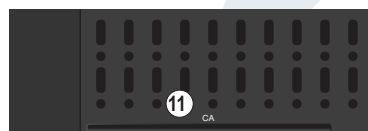
Back Panel

- ⑥ LNB IN: Connection for the coaxial cable to the signal from the satellite system
- ⑦ S/PDIF: Audio interface for amplifier/audio console
- ⑧ HD OUT: Connection to an HDTV quality TV
- ⑨ SCART: For connecting to a TV set, using SCART cable [not for HD TV]
- ⑩ Connection for an adapter (DC 12V)



Subpages

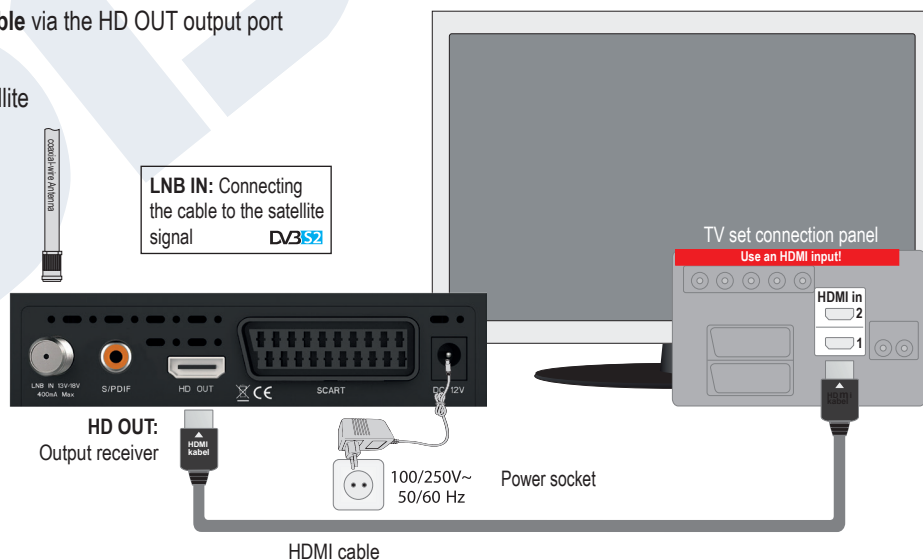
- ⑪ Card reader
- ⑫ IR IN: Infrared connection port



Connecting and switching on

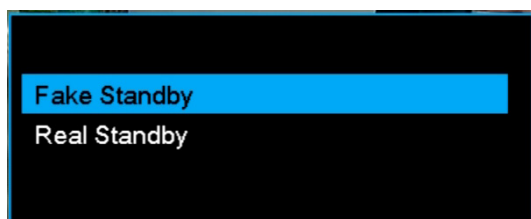
Note: For interference-free satellite TV reception, a specialist technician must calibrate your satellite TV system with a digital TV level meter

- Connect the receiver using **HDMI cable** via the HD OUT output port to your TV's HDMI input port
- Now connect the receiver to the satellite antenna cable via the **LNB IN** input.
- Insert the batteries into the remote control. Notes on the remote control can be found on the back of these instructions.
- Connect the receiver to the power supply.
- The receiver starts with the BOOT process and is operational within a short time



Switching off

By pressing the Power button once on your remote control, a pop-up window opens.



You can choose any of these two types of Stand-by mode, according to your preferences. When pressing and holding the Power button of your remote control for more than 2 sec., the device goes into OFF mode. For more settings please refer to page 21

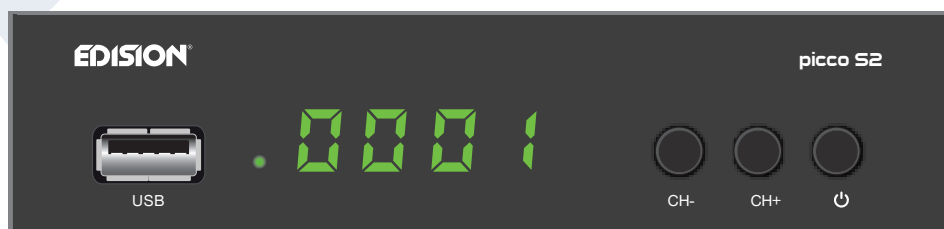
► Language Selection

During the initial start, please select your language.



► Features

- Type: Digital Satellite Receiver for DVB-S2
- Full HD H.264 decoding support
- Resolution: 480p, 576p, 720p/50Hz, 720p/60Hz, 1080i/50Hz, 1080i/60Hz, 1080p/50Hz, 1080p/60Hz TV Standard
- DiSEqC 1.2, 13/18V, 0/22K, LNB
- 1 x Card Reader
- 1 x HDMI output for High definition video/audio.
- 1 x Scart
- 1 x IR in (jack)
- 1 x S/PDIF output
- 1 x USB
- 1 x LED Display
- LNB in
- 6000 TV/Radio channels memory
- PAL/NTSC auto-switch
- Multilingual OnScreenDisplay
- EDIVISION electronic program guide
- Supports Picture In Grafik (PIG)
- Channel Edit and Favourite Lists
- Auto and Manual channel search
- Auto-timer On/Off
- Wifi Connection (embedded)
- Wifi Connection (with USB Dongle)
- 3G Connection (with USB 3G Modem)
- PVR via USB
- Time Shift function
- Subtitle support
- Teletext support
- Last channel auto save
- Software upgrade & backup/channel list, via USB.
- Supports FAT 16/32, NTFS
- Parental control
- 100 ~ 240V Voltage, 50Hz/60Hz
- Media player MP3/ JPEG/BMP/AVI/DivX/ VOB/MKV
- Dimensions: (W x H x D): 125x120x35 (mm)
- Weight: 0,5 kg
- Color: black
- Warranty: 2 years

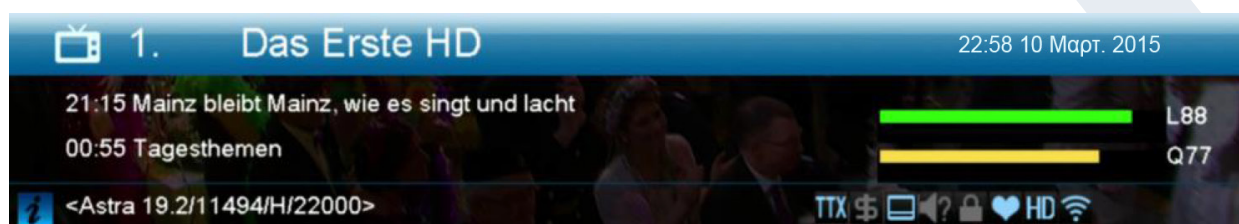


► Information bar (InfoBar)

When in the TV/Radio mode, the **'INFO' button** displays an information bar (InfoBar) at the lower edge of the screen. This bar is faded-in up to 10 seconds.

How to change the duration of fading of the information bar:

1. Press the **'MENU' button** to open the main menu.
2. Use the **left/right** arrow buttons to navigate to the 'System' item.
3. Use the **up/down** arrow buttons to navigate to the 'Other settings' menu item and press the **OK button**.
4. Use the **left/right** arrow buttons to select the value in seconds you want to set (max. 10s) in the 'OSD time exceeded' item.
5. Press the **EXIT button** to exit the menu.



The InfoBar in TV or Radio mode shows the following information about the current program and selected station:

- the place in the program list
- the name of the station
- the current program (as far as information is available) including start time
- the following program (as far as information is available) including start time
- the name of the favourite list
- the time



- indicates the availability of Teletext for the current program
- indicates if the transmitted program is encrypted
- indicates if subtitles are available
- indicates if the sound broadcasted is in stereo or mono format, left or right balance
- indicates if the program is blocked (child protection)
- indicates that the station is present in a favourite list
- indicates if the program is transmitted in HD
- indicates if Wi-Fi network connection exists

Functions and settings:

If the InfoBar is displayed, detailed information about the current program can be displayed (if available) by (repeated) pressing the **'INFO' button**. If multiple information pages are available, scroll through these pages by using the **'PAGE+'/'PAGE-' buttons**. Use the **left/right** arrow buttons to switch between the information of the current and next program. Use the **red button** to display further (technical) information. Use the **EXIT button** to exit the menu with the detailed information.

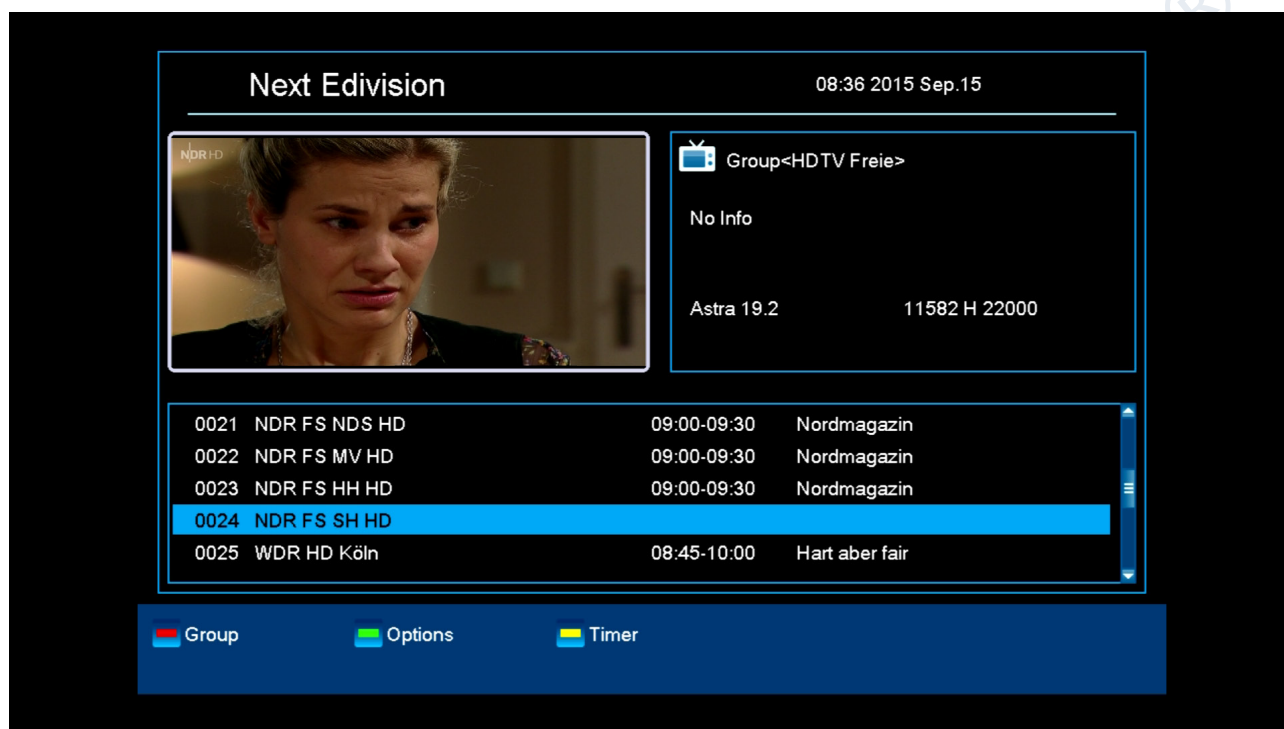
Use the **EXIT button** again to switch off the InfoBar.

► EDIVISION - Your electronic program guide

Standard: EDIVISION is an electronic program guide with its own OSD menu. EDIVISION presents the information provided by the service provider in detailed views. In addition, up to 8 time-controlled recordings (Timer) can be programmed from here. Note that not all channels/program providers provide program-related information.

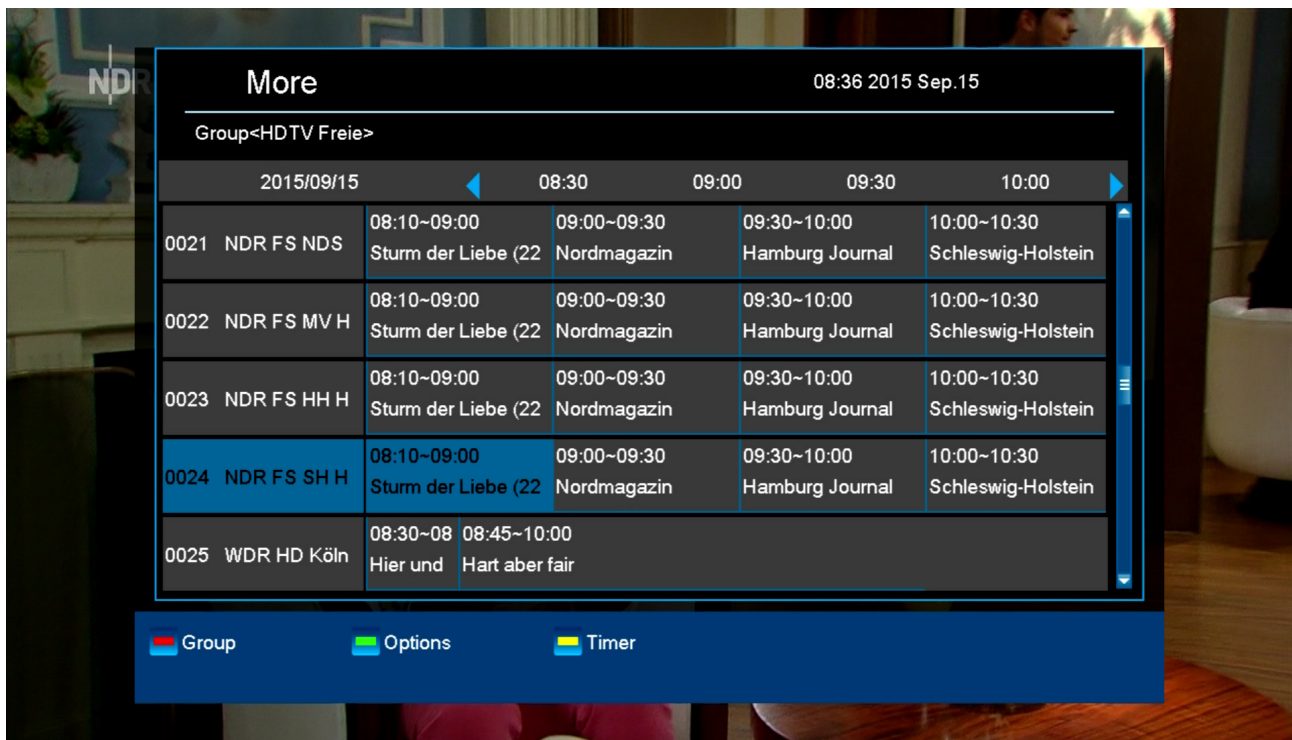
Use the **EDIVISION button** on the remote control to start your program guide.

Functions and settings:



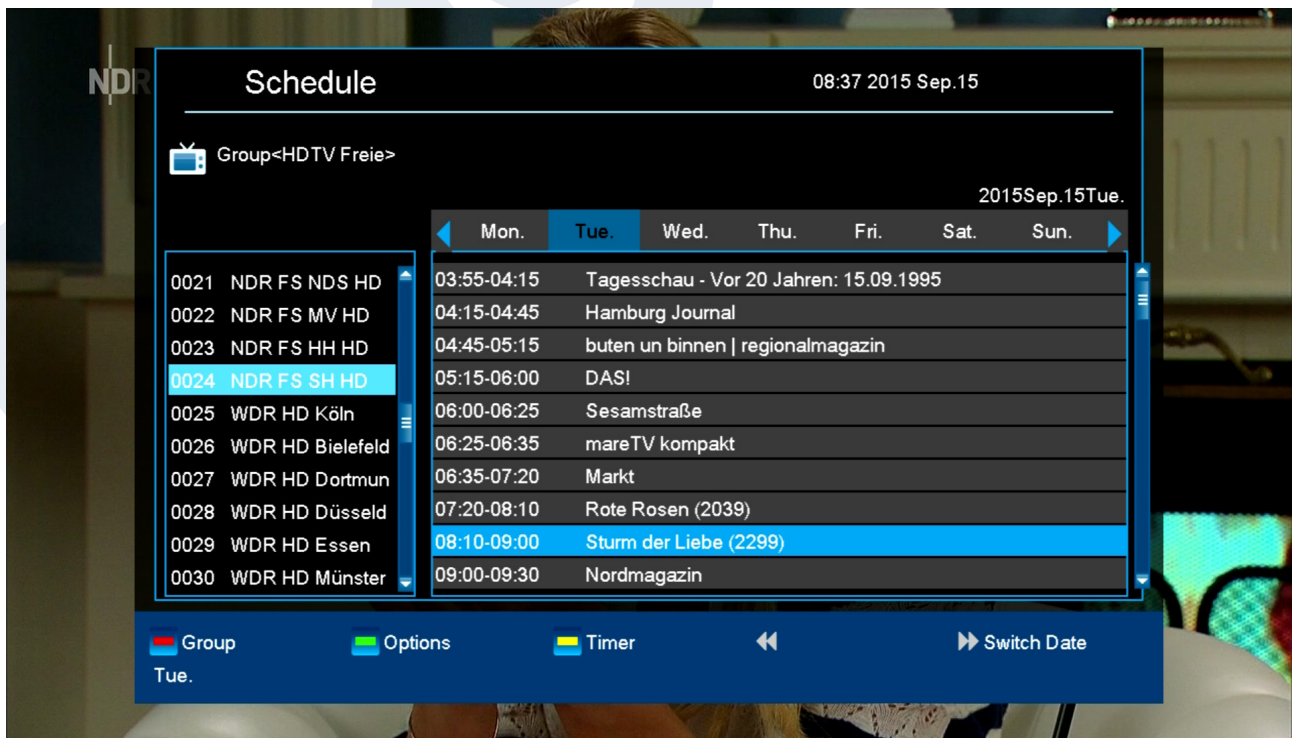
The window of 'EDIVISION' is structured differently, depending on in which mode you are. The mode (now, next, more, timetable) can be changed with the **green button**.

Information can be found at the top left in the modes 'Now' and 'Next' on the current or next program and on the channel in text format, at the top right, the current TV picture (in TV mode). In the lower area, the current program list can be found which can be navigated with the **up/down** arrow buttons and another channel can be chosen with the **OK button**. If the channel provides program-related information, it will be displayed in the list (e.g. duration of the program in form of bars, program title). Press the **OK button** to display detailed information about the program, if available. Use the **left/right** arrow buttons to switch between 'Now' and 'Next EDIVISION modes.



The 'More' mode displays program information in chart form and chronological order. Use the **left/right** arrow buttons to navigate between a channel's temporal program information and use the **up/down** arrow buttons to move the cursor (yellow marking) in the channel list. The **OK button** may possibly have to be pressed if another channel was selected and the program-related information should be displayed (if available). If the cursor is located on the right-hand side of a program title, detailed information about this program can be displayed by pressing the **OK button**.

The 'Timetable' mode displays the currently selected program list in chart form on the left and program information in weekly format on the right. Use the **left/right** arrow buttons



EDIVISION window in 'Timetable' mode

To navigate between the channel list and the **PREV/NEXT** buttons to navigate daily overview.

Use the **up/down** arrow buttons to navigate between the weekdays in the respective list. If the cursor is located on the right-hand column side of a program title, even more detailed information about this program can be displayed (if available) by pressing the **OK button**.

The following functions and buttons can be used in all modes:

The **red button** displays an overview of the existing channel lists (groups). Use the **arrow buttons** to navigate through this overview and the **OK button** to set the channel list to be used by EDIVISION.

The **green button** calls up a menu allowing to switch between the different views of EDIVISION by using the **up/down** arrow buttons and the **OK button**.

The **yellow button** calls up a Popup Timer Menu. Select the 'VCR' item to program time-based events (e.g. recordings). Select the item Timer List to see the programmed events.

If you want to make a recording on a certain date in the future, select the item 'USB/HDD Recorder'. Use the **up/down** arrow buttons in the following window to navigate between the menu items and the **left/right** arrow buttons and **OK button** to set the values. The following settings can be made in the menu 'Timer'.

Timer number: Calling up the timer menu automatically switches to the next (available) programmable timer. Use the left/right arrow buttons the OK button and the up/down arrow buttons to switch between timers. Up to 8 different events can be programmed.

Timer mode: Set the recording mode here. Choose whether the recording is carried out once, daily, weekly or monthly.

Timer service: Set the service entry 'Recording TV channel' here for a TV recording and 'Recording Radio channel' for a radio recording.

Station: Set the channel here.

Date: Set the start date of the recording here.

Start time: Set the start time here.

Duration: Set the duration of the recording here (recording length).

After making changes and in order to keep them, confirm with 'Yes' in the appearing dialogue window. Exit the timer menu with the **EXIT button**.

Note: An error message appears under certain circumstances. As a rule, an incorrect start time or start date was given. Check the information!

Also note that a recording is only possible if a corresponding USB memory device is already connected to the receiver.

Exit 'EDIVISION' by pressing the **EXIT button**.

► Program list

Call up the program list in the TV or Radio mode via the **OK button** on the remote control or receiver. The window of the program list can be displayed in 3 forms.



How to change the fading time of the information bar:

1. Press the **white button** to change the views.

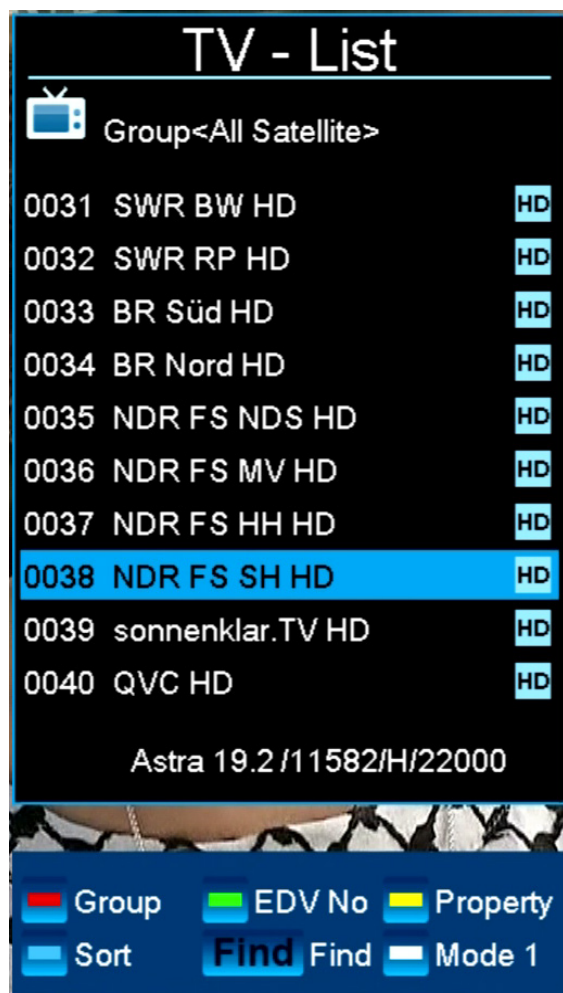
Use the **left/right** arrow buttons on the remote control to switch between the columns, the up/down arrow buttons to scroll through a column and the **PAGE buttons** to scroll page by page.

If the main group 'Favourite' is selected in the left column, the arrangement of the favourite lists can be changed by pressing the blue button in the centre column, the up/down arrow buttons and OK button.

The following options exist if the cursor is located in the right column:



- Green button:** Displays, if available, program-related information in the form of EDIVISION for the selected program.
- Yellow button:** Opens the 'Options' window. The selected channel can be added to a favourite list, locked, marked to be skipped, deleted and/or renamed.
- Blue button:** Allows sorting the channels according to different criteria.
- FIND button:** Searching for channels via an input mask of which only the initial letter is known.



OK button: The selected channel becomes the active channel by pressing the OK button.

Use the **left/right** arrow buttons in the simplified view of the program list to switch between the favourite lists, the **up/down** buttons scroll through the list line-by-line and the **Page+/Page-** buttons scroll page by page. The chosen channel becomes the active channel by pressing the OK button.

Exit the program list (standard or simplified view) by pressing the **EXIT button**.

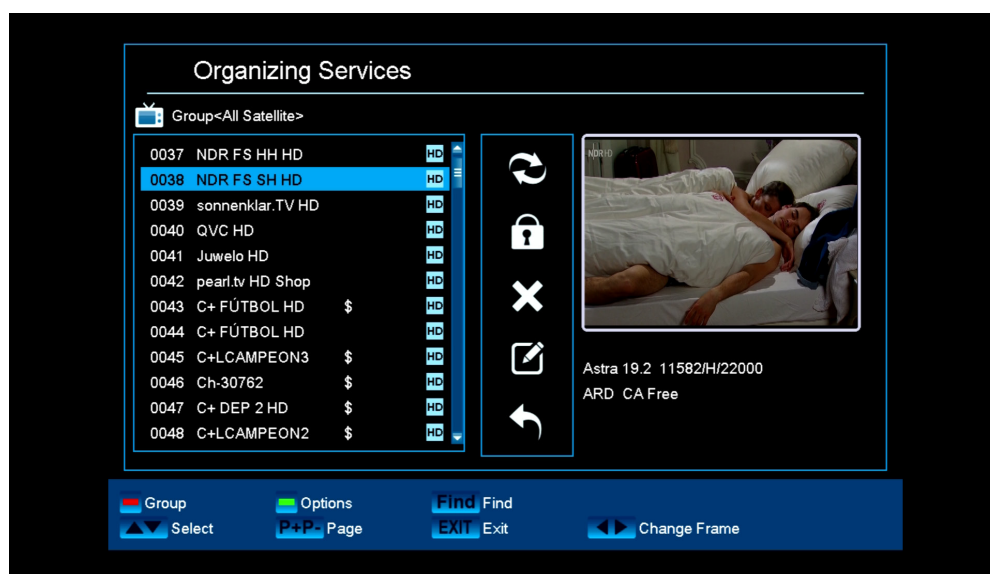
► Menu program

Edit channel

Your channel list(s) for TV or Radio channels can be customized in this menu.

Notes: Make sure the receiver is in the correct mode. If wanting to edit radio channel lists, the receiver must be in radio mode. The **TV/Radio button** enables switching between TV and Radio mode.

Standard: The left column of the menu window shows the list of the channels of the currently selected channel list, the right column shows the symbols for 'Move', 'Lock', 'Delete', 'Rename' and 'Skip'.



Functions and settings in the menu:

Use the **left/right** arrow buttons to switch back and forth between the columns in the menu window, the **up/down** arrow buttons to move the cursor up or down in the respective column.

Mark one or more channels in the left column by pressing the OK button. Use the red button to display an overview of all channel lists/channel groups and enable an appropriate selection. The window overview displays the list in which you currently are.

The **green button** displays other possible options. The following options are available:

- Select all:** All channels are selected.
- Deselect all:** All channels are deselected.
- Select other:** All channels are selected that were previously not selected.
- Select TP:** All channels of a transponder can be selected here.

The **'FIND' button** allows quick search for channel (names). A search window appears after pressing this button. Entry into the search field is done via a letter or numeric field actuated with the **arrow buttons** and by pressing the **OK button**. Provided that channels with appropriate initial characters are found in the current list, they will be displayed on the left-hand side. Exit the search window with the **EXIT button**.

How to move a channel:

1. Move the cursor (yellow bar) in the channel list to the channel to be moved.
2. Change now with the **right** arrow button in the right part of the menu and navigate the cursor with the **up/down** buttons to the 'Move' symbol. The symbol is highlighted in colour.
3. Press the **OK button**.
4. Use now the **up/down** arrow buttons to move the selected channel in the list. It is also possible to use the **page buttons**.
5. By pressing the **OK button**, the channel remains at the new position and exits the 'Move' mode.

Tip: It is possible to move multiple channels simultaneously by selecting the respective channels first in the channel list (left menu page) with the **OK button** and then carrying out steps 2-5 as explained above.

How to lock a channel:

1. Move the cursor (yellow bar) in the channel list to the channel to be locked.
2. Change now with the **right** arrow button in the right part of the menu and navigate the cursor with the **up/down** buttons on the 'Lock' symbol. The symbol is highlighted in colour.
3. Press the **OK button**. The 'Lock' symbol appears now in the channel list behind the channel name.

Tip: It is possible to lock multiple channels simultaneously by selecting the respective channels first in the channel list (left menu page) with the OK button and then carrying out steps 2-3 as explained above.

How to unlock a channel:

1. Move the cursor (yellow bar) in the channel list to the locked channel.
2. Change now with the right arrow button in the right part of the menu and navigate the cursor to the 'Lock' symbol. The symbol is highlighted in colour.
3. Press the OK button. Enter 0000 or the code specified by you and the channel is unlocked. The 'Locked' symbol is removed from the channel list.

Tip: It is possible to unlock multiple channels simultaneously by selecting the respective channels first in the channel list (left menu page) with the OK button and then carrying out steps 2-3 as explained above.

How to delete a channel:

1. Move the cursor (yellow bar) in the channel list to the channel to be deleted.
2. Change now with the right arrow button in the **right** part of the menu and navigate the cursor to the 'Delete' symbol. The symbol is highlighted in colour.
3. Press the **OK button**. The channel is removed from the list.

Tip: It is possible to delete multiple channels simultaneously by selecting the respective channels first in the channel list (left menu page) with the **OK button** and then carrying out steps 2-3 as explained above.

How to name a channel:

1. Move the cursor (yellow bar) in the channel list to the channel to be renamed.
2. Change now with the right arrow button in the **right** part of the menu and navigate the cursor to the 'Rename' symbol. The symbol is highlighted in colour.
3. Press the **OK button**.
4. A window appears with the input field. Select the character and letter with the **arrow buttons** and OK button. The last character (your input) can be deleted by navigating the cursor to the '<' character in the letter field. A space is added by navigating with the **arrow buttons** to the character. Confirm your entry by navigating with the arrow buttons to the 'OK' area. The new name is now added to the channel list. The input window can be exited at all times by using the **EXIT button** and thereby cancelling the process.

Skip channel

If a channel in the list should not be deleted and also not be displayed, simply skip this channel when scrolling through the list.

How to select a channel to be skipped:

1. Move the cursor (yellow bar) in the program list to the channel selected to be skipped (not to be displayed).
2. Change now to the right part of the menu and navigate the cursor to the 'Skip' symbol. The symbol is highlighted in colour.
3. Press the **OK button**. The program list now displays the 'Skip' character behind the channel name, i.e. when scrolling through the list during TV or Radio mode, the channel will be skipped.

Exit the 'Edit channel' menu by pressing the **EXIT button**. If changes were made, a dialogue window appears prompting you to confirm these changes. The changed settings are saved by selecting 'Yes'.

Note: Channel is only deleted, moved and/or locked upon confirmation with 'Yes'. NO changes are saved when selecting 'No'.

Edit favourites

Your favourite lists for TV or Radio programs can be customized in this menu in order to suit your personal choices.

Standard: This menu is divided into 3 columns. The list of the available channels can be found on the left side, depending on the overview selected. The currently selected favourite list can be found on the right side. The 'Add', 'Remove', 'Move' and 'Rename' symbols can be found in the centre.



Functions and settings in the menu:

Use the **left/right arrow buttons** to switch back and forth between the columns in the menu window, the **up/down arrow buttons** to move the cursor up or down in the respective list. Select one or more channels by pressing the **OK button**.

When in the left column, it is possible to display an overview of all lists (except the favourite list) with the **red button** and select another group/list with the **arrow buttons** and **OK button**. The title of the left column shows the list currently displayed.

The **green button** displays other possible options for channel lists. The following options are available:

- Select all:** All channels are selected.
- Deselect all:** All channels are deselected.
- Select other:** All channels are selected that were previously not selected.
- Select TP:** All channels of a transponder can be selected here.

When in the left column, the **'FIND' button** enables quick search of channel names. The search window appears after pressing this button. Entry into the search field is done via a letter or numeric field actuated with the **arrow buttons** and by pressing the **OK button**. Provided that channels with appropriate initial characters are found in the list, these will be displayed on the left-hand side. Exit the search window with the **EXIT button**.

The **'FAV' button** enables switching of the favourite list in order to view or edit it. Press the **'FAV' button**, to display the overview of the favourite lists. Use the **up/down arrow buttons** and **OK button** to select the favourite list to be edited. The list will then appear on the right side of the menu. The channels are marked on the left side with a symbol already available in the selected favourite list.

How to add a channel to a favourite list:

1. Move the cursor (yellow bar) in the channel list in the left menu window to the channel to be added.
2. Change now to the central part of the menu and navigate the cursor to the 'Add' symbol. The symbol is highlighted in colour.
3. Press the OK button. The channel is inserted at the end of the favourite list. The channel is marked with a symbol on the left side of the menu.

Tip: It is possible to add multiple channels simultaneously to the favourite list by selecting the respective channels first in the channel list (left menu page) with the OK button and then carrying out steps 2-3 as explained above.

How to remove a channel from a favourite list:

1. Move the cursor (yellow bar) in the favourite list in the right menu window to the channel you want to be removed.
2. Change now to the central part of the menu and navigate the cursor to the 'Remove' symbol. The symbol is highlighted in colour.
3. Press the **OK button**. The channel is removed from the favourite list. The channel is no longer marked with a symbol on the left side of the menu.

Tip: It is possible to remove multiple channels simultaneously from the favourite list by selecting the respective channels first in the favourite list (right menu page) with the OK button and then carrying out steps 2-3 as explained above.

How to move a channel in a favourite list:

1. Move the cursor (yellow bar) in the favourite list in the right menu window to the channel to be moved.
2. Change now to the central part of the menu and navigate the cursor to the 'Move' symbol. The symbol is highlighted in colour.
3. Press the **OK button**.
4. Use now the **up/down arrow buttons** to move the selected channel. The channel now moves up and down in the list.
5. By pressing the **OK button**, the channel remains at the new position and exits the 'Move' mode.

Tip: It is possible to move multiple channels simultaneously by selecting the respective channels first in the channel list (left menu page) with the **OK button** and then carrying out steps 2-5 as explained above.

How to name a favourite list:

1. Press the **'FAV' button** and select the favourite list to be renamed.
2. Change now to the central part of the menu and navigate the cursor to the 'Rename' symbol. The symbol is highlighted in colour.
3. Press the **OK button**.
4. A window appears with the input field. Select the character and letter with the **arrow buttons** and **OK button**. The last character (your input) can be deleted by navigating the cursor to the '<-' character in the letter field. A space is added by navigating with the **arrow buttons** to the character '--'. Confirm your entry by navigating with the arrow buttons to the 'OK' area. The input window can be exited at all times by using the **EXIT button** and thereby cancelling the process.

Exit the 'Edit favourites' menu by pressing the **EXIT button**. If changes were made, a dialogue window appears prompting you to confirm these changes. The changed settings are saved by selecting 'Yes'.

Note: Upon confirmation with 'Yes', channels are only deleted, moved and/or added from/to favourite lists or names of favourite lists are changed. NO changes are saved when selecting 'No'.

► Menu Conditional

Other settings

Functions and settings in the menu:

- TV list no.:** Set here the way you want the program list to be displayed. There are modes 1, 2, 3, 4. They can also be selected in the program list with the white button.
- Automatic subtitles:** Selects whether existing subtitles are displayed automatically or not.
- Go into standby:** Time setting in minutes in which the receiver will switch into standby mode (30 minutes up to 3 hours).
- 0.5 Watt Standby:** On/Off selection of 0.5 watt standby mode.
A = 0.5 watt red LED lights up. Off = no standby mode.
- OSD fading time:** Specify here the display duration of the information windows. Use the left/right arrow buttons to change the value (from 1 to 10 seconds).



TV list no. mode 1, 2, 3, 4



TV list no. 1



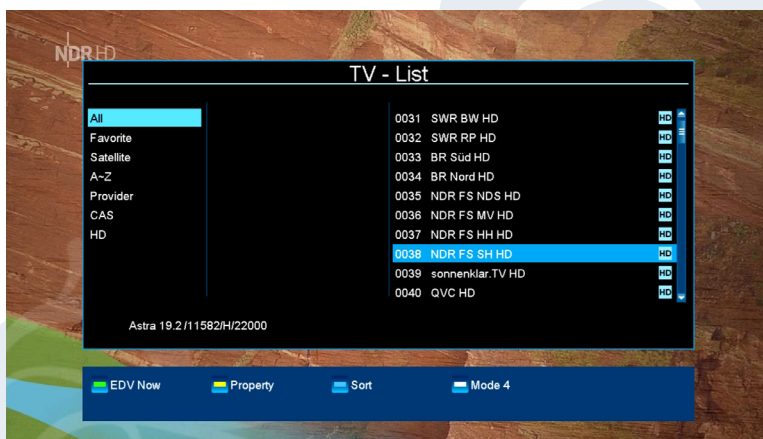
Use the white button to select the TV list modes 1, 2, 3, 4 directly.



TV list no. 2

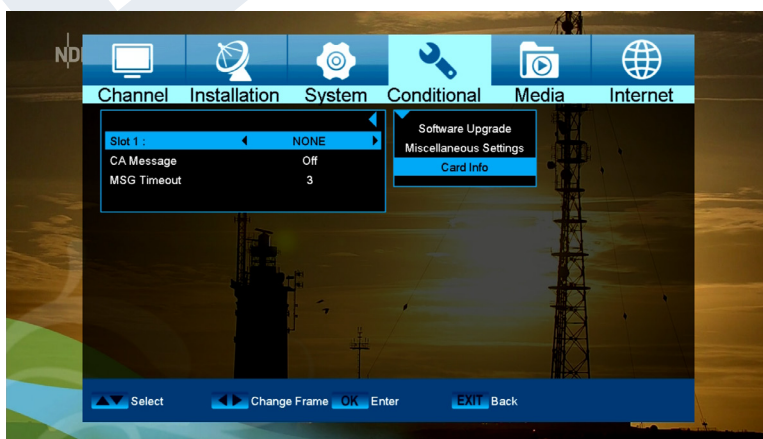


TV list no. 3



TV list no. 4

SmartCard information



► Menu installation

Satellite installation

Please observe the following notes before configuring in the menu:

HDTV Sat TV requires a minimum size satellite dish of 80 cm. A specialist should calibrate the system with a digital TV level measuring set. Depending on the setting selection, the intensity level and quality of the signal is shown in the lower area.

Functions and settings in the menu:

Satellite:	Select with the left/right arrow buttons the satellite to be installed.
LNB type:	Set here the LNB type used.
TP index:	Set the transponder here.
DiSEqC:	Set the value here for the DiSEqC.
Position:	When motor control is used, you can set it's actuation here.
22K:	This point can only be reached if the 'Universal' value was not set at 'LNB type' item. The 22 kHz circuit can then be switched on or off. The 22 kHz circuit is used to switch the lower and upper frequency band in the LNB.
Polarity:	Polarity can be set here.
Toneburst:	Toneburst is an additional trigger value provided by receivers. This signal does not contain digital commands, however, most switches can evaluate this signal for position switching. Set the value to 'On' or 'Off'.
LNB strength:	Set this parameter to 'On' or 'Off'.

Use the **red button** to call up the menu for the search of channels of the set satellites.
The following settings can be found in this menu:

Search mode:	Select here between the values All (channels) or Available (channels). With the value All, encrypted and free-to-air channels are sought.
Program type:	Specify here whether the TV, Radio or TV and Radio channels are sought.
Select search mode:	Set here a 'Manual Search' or 'Blind Scan'.
NIT search:	Set here whether the NIT (Network Information Table) should be used during the search.

Navigate with the **up/down** arrow buttons to the **'OK' button** for search and then press the OK button to start the search process. The menu window can be exited at any time with the **EXIT button**.

Use the **green button** to call up the menu for the search of channels according to the set values at the item TP Index (Transponder Index). The following settings can be specified:

- Search mode:** Select here between the value All (channels) or Available (channels). With the value All, encrypted and free-to-air channels are sought.
- Program type:** Specify here whether the TV, Radio or TV and Radio channels are sought.
- Select search mode:** Set here a 'Manual Search' or 'Blind Scan'.
- NIT search:** Set here whether the NIT (Network Information Table) should be used during the search. This value is only changeable when setting the 'Manual Search' value for the 'Select Search Mode' item.

Navigate with the **up/down** arrow buttons to the **'OK' button** for search and then press the OK button to start the search process. The menu window can be exited at any time with the **EXIT button**.

The **blue button** starts the automated detection of available satellites via DiSEqC. If satellites were identified by means of installation and alignment of the satellite reception system, they will be displayed. The following changeable settings can be reached via the 'Search' button.

- Search mode:** Select here between the values All (channels) or Available (channels). With the value All, encrypted and free-to-air channels are sought.
- Program type:** Specify here whether the TV, Radio or TV and Radio channels are sought.
- Select search mode:** Set here a 'Manual Search' or 'Blind Scan'.
- NIT search:** Set here whether the NIT (Network Information Table) should be used during the search.

The **OK button** starts the search process. The menu window can be exited at any time with the **EXIT button**.

The **white button** (PLAYMODE button) starts a Blind Scan based on the above settings.

The **'MUTE' button** switches on or off a signal tone. Exit the 'Satellite Installation' menu with the **EXIT button**.

Auto installation

Select this item to install satellites and channels automatically with pre-set parameters. The receiver thereby searches first in the first step for possible satellites and in the second step (provided satellites were found with sufficient signal strength) for channels in order to include them in the program list.

Exit the 'Auto Installation' menu with the **EXIT button**. With this button, the installation process can also be cancelled at any time.

Satellite guide

This menu item can help setting up the receiving system by entering the geographical data of the location of the satellite system.

Functions and settings in the menu:

- Local length:** Set the value here for the longitude of the location where the receiving system is located.
- Local latitude:** Set the value here for the latitude of the location where the receiving system is located.
- Calculate:** Navigate the cursor with the arrow buttons to this field and press the OK button. The setting data of the antennas are calculated and displayed as 2 graphics.

Exit the 'Satellite Guides' menu by pressing the **EXIT button**.

► Menu system settings

Languages

Functions and settings in the menu:

Menu language:	Select the language in which the Menu is displayed.
First audio:	Set the audio language here for the first channel.
Second audio:	Set the audio language here for the second channel.
Audio priority:	Specify here which preferred audio mode (if available) should be used.
EDIVISION:	Specify the language here in which the electronic program guide EDIVISION (EDV) should be displayed. (The program provider must support the language).
Subtitle language:	Specify the language here in which the subtitle information will be displayed. (Language must be supported by the service provider).
Teletext:	Specify the language here in which the teletext/video text information will be displayed. (Language must be supported by the service provider).

Exit the 'Language' menu by pressing the EXIT button.



Minors' protection

This menu is only accessible by entering a PIN code. The default setting of the PIN code is: 0000.

Functions and settings in the menu:

Menu lock:	Set here whether to allow or deny access to the menu. If the 'On' value is selected in this item, accessing the menu is only possible via PIN code. Channel bar, EDIVISION and favourite lists are exempt.
Channel lock:	Specify here whether or not channels can be locked in general.
New password:	Specify a new password here.
Confirm password:	Repeat the new password.

Exit the 'Youth Protection' menu by pressing the **EXIT button**.

Time setting

Functions and settings in the menu:

GMT user:	Select 'On' here and the receiver automatically obtains the current time and date (via satellite signal). When the 'Off' option is selected here, date and time can be self-determined in the following items.
Adjust GMT:	This item can only be reached when the 'On' option was set for the 'GMT user' item. It will be possible to specify here the difference between your local time and GMT (Greenwich Mean Time). For Germany/Austria/Switzerland/ Luxembourg applies: UTC+01:00. For Athens/Bucharest/Istanbul applies: UTC+02:00. Scroll with the left/right arrow buttons to the value you want to set.
Summer:	Specify here whether daylight saving time should be considered.
Date:	This item can only be reached when the 'Off' option was set for the 'GMT User' item. Enter the date via the number buttons.
Time:	This item can only be reached when the 'Off' option was set for the 'GMT User' item. Enter the time via the number buttons.
Time display:	Specify whether (On) or not (Off) the time should be displayed in the front display of the receiver.

Exit the 'Time Settings' menu by pressing the **EXIT button**.



Timer

Up to 8 time-based events can be programmed in this menu. In addition to programming recordings of Radio or TV channels, it is also possible to display events, such as a nice birthday or anniversary greeting at a certain time or specify to which channel to be woken up. Information on recordings can also be found in section EDIVISION.

Functions and settings in the menu:

Timer number: Calling up the timer menu automatically switches to the next (available) programmable timer. Use the left/right arrow buttons or OK button and the up/down arrow buttons to switch between (programmed) timers.

Timer mode:	Set the recording mode here. Choose whether the recording is carried out once, daily, weekly or monthly.
Timer service:	Specify a service here. Select the item 'Recording TV Channel' or 'Recording Radio Channel' for recordings. If wanting to be woken with a specific channel, select the 'TC Channel' or 'Radio Channel' here. Select the 'Message' input if wanting to display a message on the screen at a certain time. Wake-up message: This item only appears when coming across the 'Message' setting in the previous item. This allows to choose between 'Birthday', Anniversary or 'General'.
Station:	This item does NOT appears when coming across the 'Message' setting in the 'Timer Service' item. Otherwise, set the channel here to be recorded or to which to be woken up.
Date:	Set the (start) date of the recording here.
Start time:	Set the start time here.
Duration:	This item is only changeable if the 'Recording TV Channel' value or 'Recording Radio Channel' value was set at the 'Timer Service' item. Then set the duration of the recording here (recording length).
Standby at the end:	This item is only changeable if the 'Recording TV Channel' value or 'Recording Radio Channel' value was set at the 'Timer Service' item. It is then possible to determine whether the receiver should switch into standby mode after recording.

Exit the timer menu with the **EXIT button**. After making changes and wanting to keep them, confirm with 'Yes' in the appearing dialogue window.

Note: An error message appears under certain circumstances. As a rule, an incorrect start time or start date was given. Check the information!

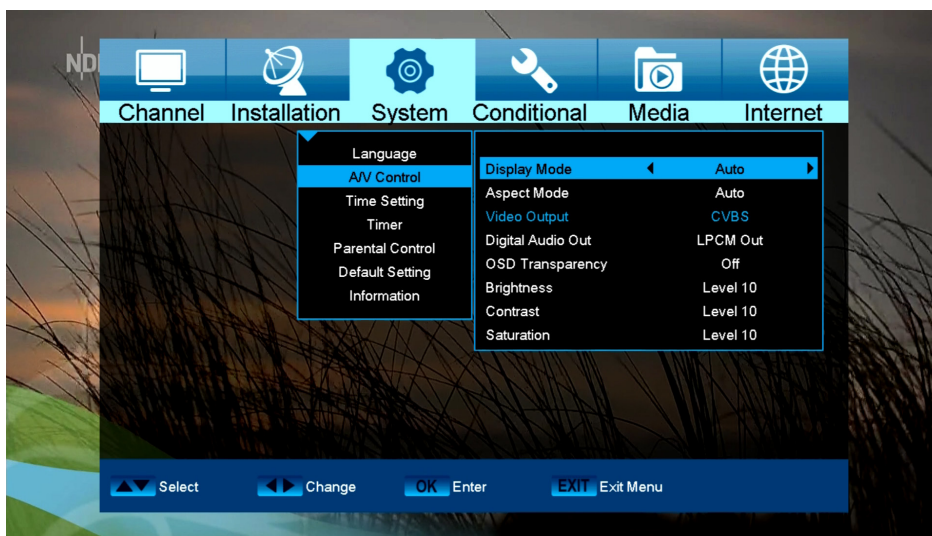
Note: A recording is only possible if a compatible USB memory device is connected to the receiver.

Note: A list of all programmed Timers can be found as follows: Press the EDIVISION button in the TV mode and then the yellow button, and then select 'Timer List' in the appearing menu window.

Audio + Video

Functions and settings in the menu:

- Display Mode:** Select here between the options Auto, By Native TV, 720p_50, 720p_60, 1080i_50 or 1080i_60.
- Aspect Mode:** Determine here the aspect ratio with which the image will be displayed. (16:9, 4:3PS, 4:3LB, AUTO)
- Video Output:** Select the colour mode for image reproduction.
- Digital Audio Out:** Specify here the mode in which the digital audio output should work.



► Menu system

Information

Information about the device is displayed here. This information may be relevant when contacting your dealer. Furthermore, the version of the receiver software can be found here.

Exit the 'Information' menu by pressing the **EXIT button**.

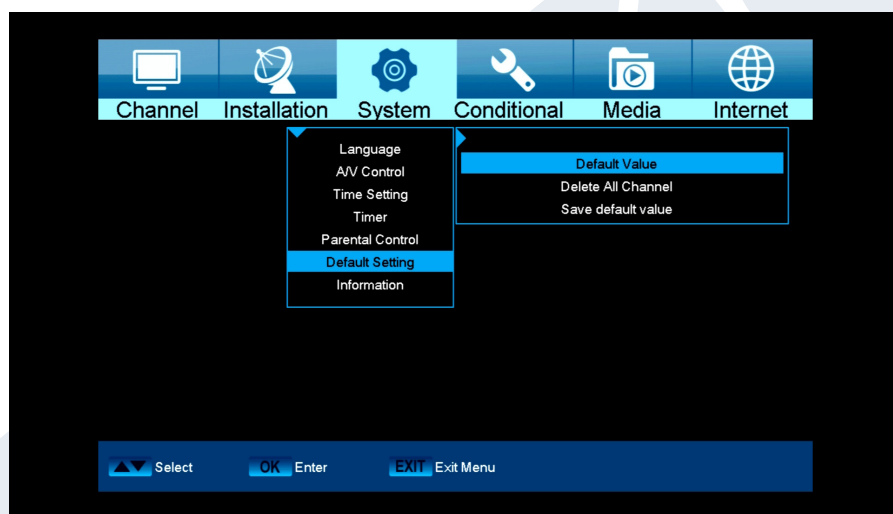
Factory setting

Use the up/down arrow buttons to select one of the following menu items and press the **OK button**.

Functions and settings in the menu:

- Factory setting:** Use of this function deletes ALL user programmed values and reinstalls factory settings. After selecting with the OK button, enter the PIN code (as a rule 0000). A warning window appears afterwards.
- Delete all channels:** The channel lists are deleted here.
- Save as factory setting:** The current configuration can be specified here as factory setting.

Exit the 'Factory Setting' menu by pressing the **EXIT button**.



Note: The 'USB' menu is only accessible if a suitable USB memory device is plugged in and recognised by the receiver.

► Menu/Media/File List

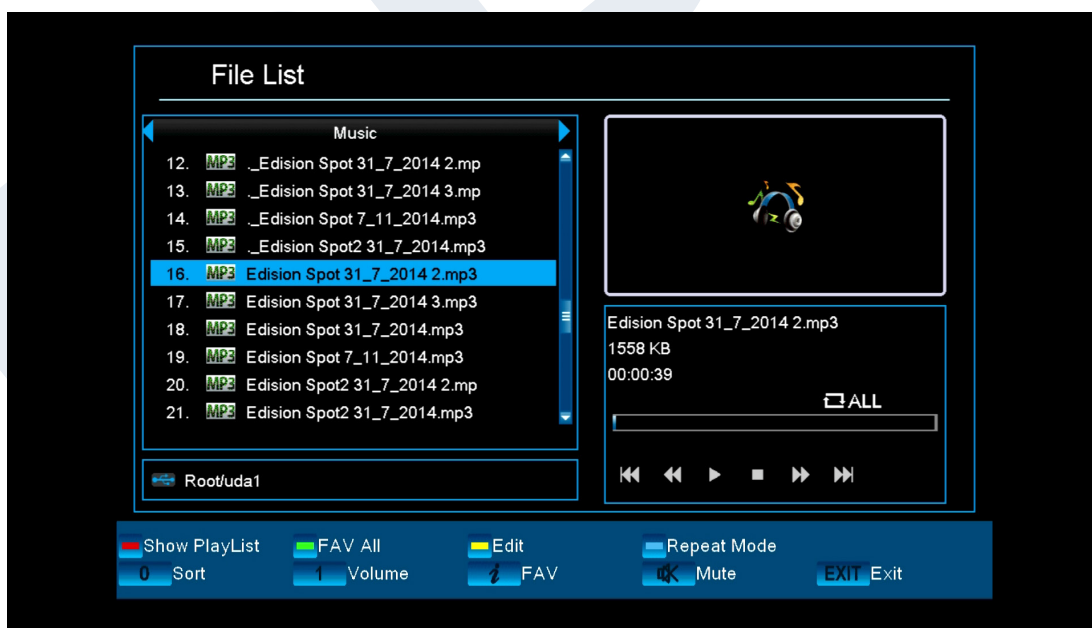


The arrow buttons enable the selection between «Image», «Video», «Software», «All» or «Music» mode.

Your images can be viewed from the USB medium in the image mode.

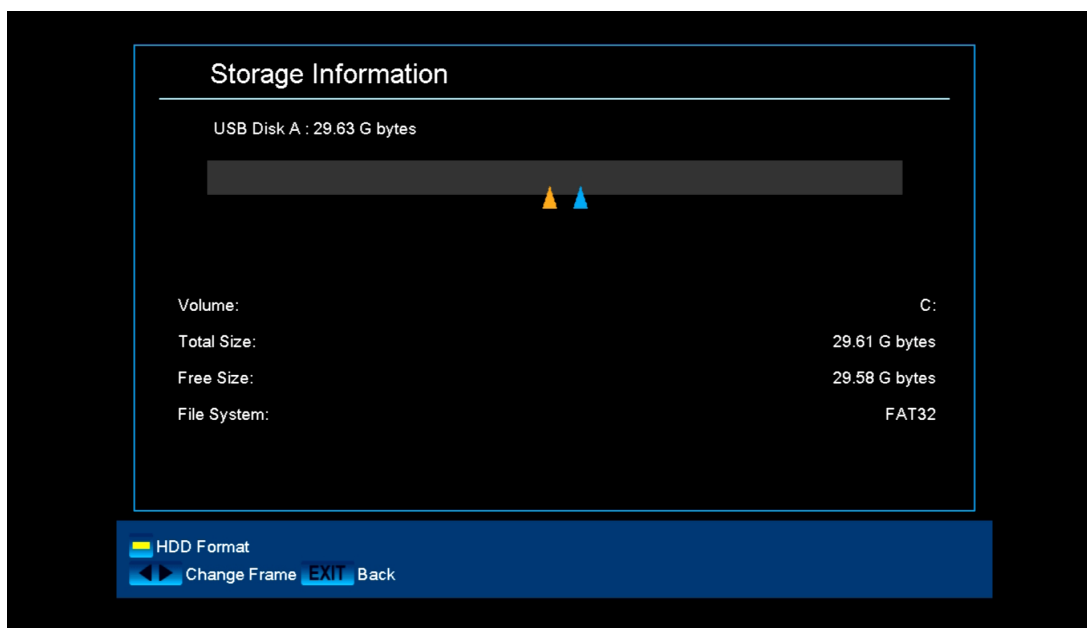
Your videos can be played from the USB medium in the video mode.

Your music can be played from the USB medium in the music mode.



► Menu/Media/Memory Information

Information can be found in this menu about the connected USB memory device.



Volume:	Displays the name.
Total memory:	Displays the total memory capacity.
Available memory:	Displays the available memory capacity.
File system:	Displays the file system used.

It is possible to format the USB memory by pressing the **yellow button** (HDD formatting). Specify in the 'HDD Formatting' menu the file system with which the USB memory should be formatted (FAT or NTFS). Please note that this will delete all existing files on this USB memory.

► Menu/Internet/Ethernet Settings

Note: The IP Address, Subnet Mask, Gateway, DNS Preferred and DNS Alternate items are only accessible if the 'Off' value is set at the 'DHCP' item.

Functions and settings in the menu:

DHCP:	When running a DHCP server on your network, it is possible to assign an IP address automatically to the receiver. For this purpose, set the 'On' value here. If DHCP is not used in your network, enter the appropriate values manually for the following items.
IP Address:	Enter an unassigned IP address from your network here.
Subnet Mask:	Enter the netmask corresponding to the network here.
Gateway:	Enter the IP address of the Gateway to the Internet here.
DNS Preferred:	The IP address for a so-called name server (DNS Server) can be indicated here.
DNS Alternate:	The IP address for an alternative name server (DNS Server) can be indicated here.
Mac Address:	This item is defined hardware-sided and shows the identifier of the network interface. This item is not changeable.
WIFI Auto Start:	Automatic connection with the WLAN after switching on.
Wireless:	WLAN name (SID)
Internal WIFI:	Internal WIFI module On/Off

Note: Use the numeric buttons on the remote control to input numbers.

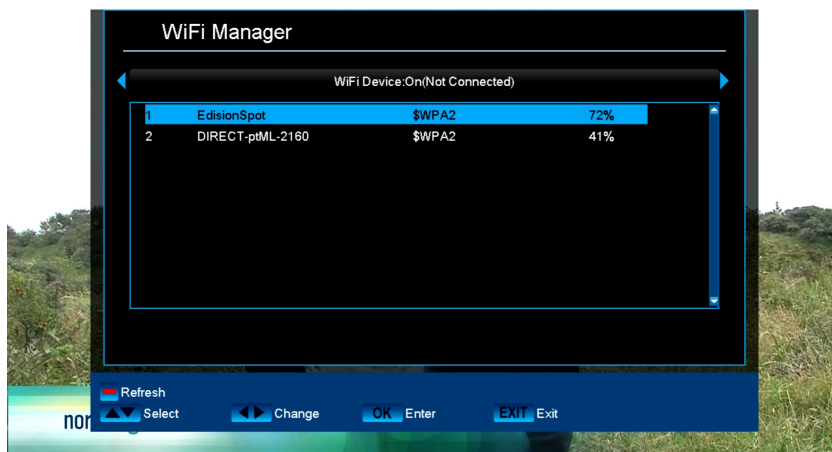
Exit the 'Network Local Settings' menu by pressing the **EXIT** button.



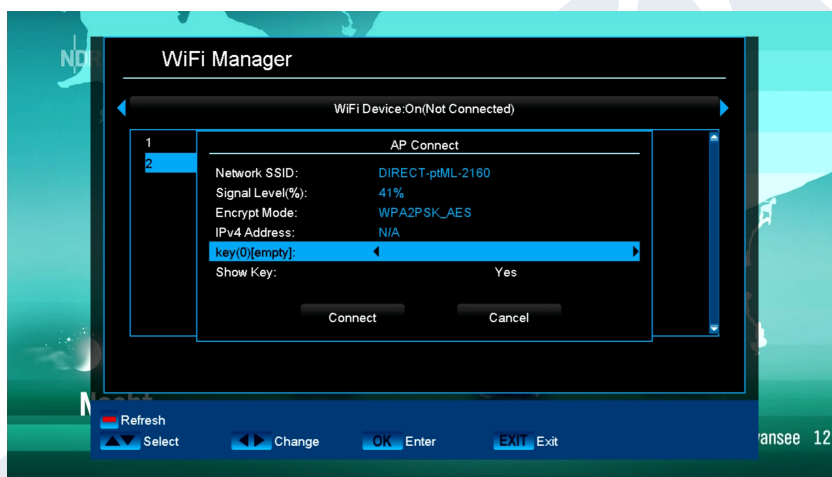
► Setting up WLAN

Please press the button **RED**. All available WLAN networks are now displayed.

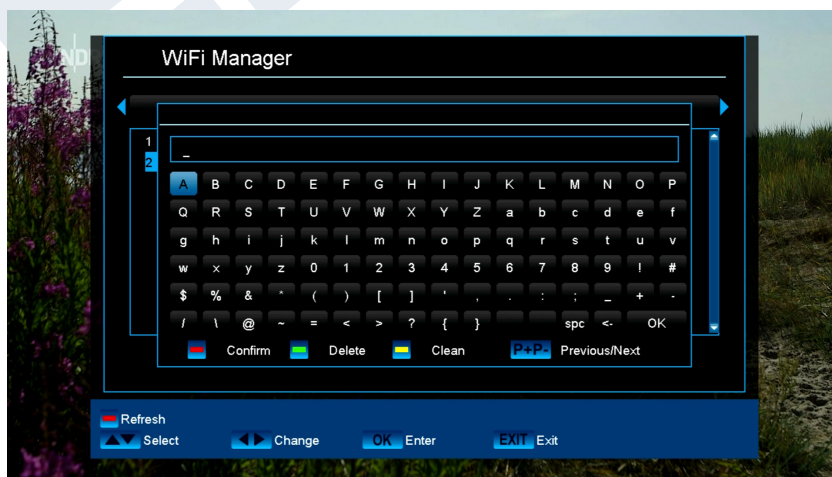
Navigate to your WLAN network. Confirm with the **OK** button.



Please navigate to the menu item **key(0)(empty)**. Confirm with the OK button.

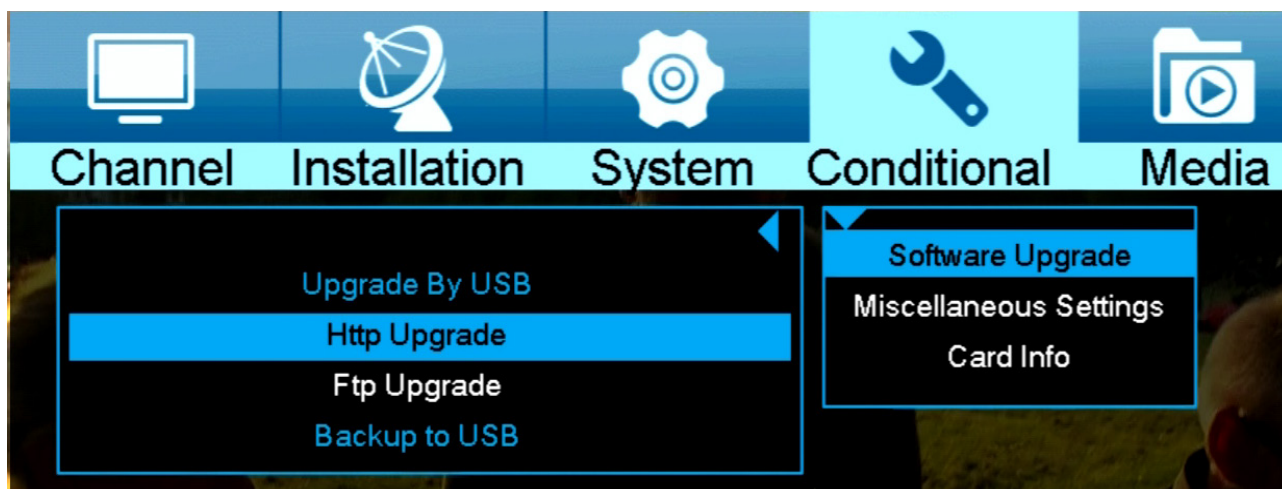


Please enter your WLAN key now.
Confirm with the **RED** button.



► Menu/Miscellaneous/Software Update

Http Upgrade



Auto Upgrade

When selecting this menu item, the receiver tries to connect with the factory-set server by EDISION. A correct cable configuration and providing the proper values in 'Network Settings' menu item according to your network, the receiver connects and retrieves the file list from the server. File name, date, time and file size are displayed. Select the software file on the '.abs' file type and press the red button. It is possible to select the part of the software to be updated in the appearing dialogue window. After selection, the upgrade process starts and moves to the following stages:

- Connect...
- Download...
- Delete...
- Write...
- Restart...

If the upgrade process is not started, it is possible to exit the 'Auto Upgrade' menu by pressing the **EXIT** button.

Update from USB/HDD

Standard: This menu is only accessible if a suitable USB data storage is connected and recognised by the receiver. Otherwise, this menu is not accessible.

Another prerequisite for a 'USB/HDD Update' is that the appropriate software file is located on the USB data storage. This file with the '.abs' file extension can be downloaded from the Edision website via a PC with Internet connection.

<http://www.edision.de>

Save the downloaded file from your PC onto the USB data storage and plug this USB data storage device into the USB port of receiver.

Note: In these circumstances, the upload speed via USB depends on the data in the USB memory. It is recommended to prepare the USB memory device first via the «HDD formatting» (ALL data will be deleted) item in the 'USB'/'Memory Information' menu (to format, start with the yellow button) and then save the software file (.abs) inside.

Functions and settings in the menu:

- Open file:** If the receiver has found files to be updated on the USB memory device, they will be displayed. Specify the file to be updated with the **arrow buttons** or **OK button**. If no files were found, it will be indicated with 'No File'.
- Update Mode:** Use the **arrow buttons** or **OK button** to set the parts of the software to be updated.
- Start:** If the software file and Update Mode are specified, navigate with the **up/down** arrow buttons to the 'Start' item. Press the **OK button** and the Update process starts.

Attention: The software update starts immediately after pressing the OK button and must not be interrupted.

Backup to USB/HDD

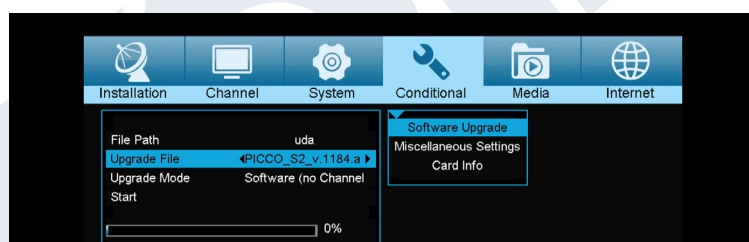
Functions and settings in the menu:

- Backup of the file:** Determine the file name for the backup file here. Press the **OK button** to display a letter and number field and specify with the **arrow buttons** and **OK button** the name for the backup file. Delete the last character by navigating in the letter field with the arrow buttons to the area '<-' and press the **OK button**. Confirm the input by navigating to the OK area and pressing the '**OK**' button on the remote control. Use the '**EXIT**' button to exit the input window.
- Backup to USB/HDD:** Navigate with the **up/down** arrow buttons to this menu item and press the **OK button** to start the backup.

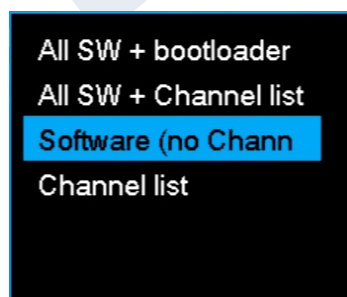
Http Update

In a few steps to the current version. Please select the option Http Update and then Auto Update. It is possible on the next page to select the desired option to be transferred to the box. Please pay attention to the date in the image name.

NEW Version

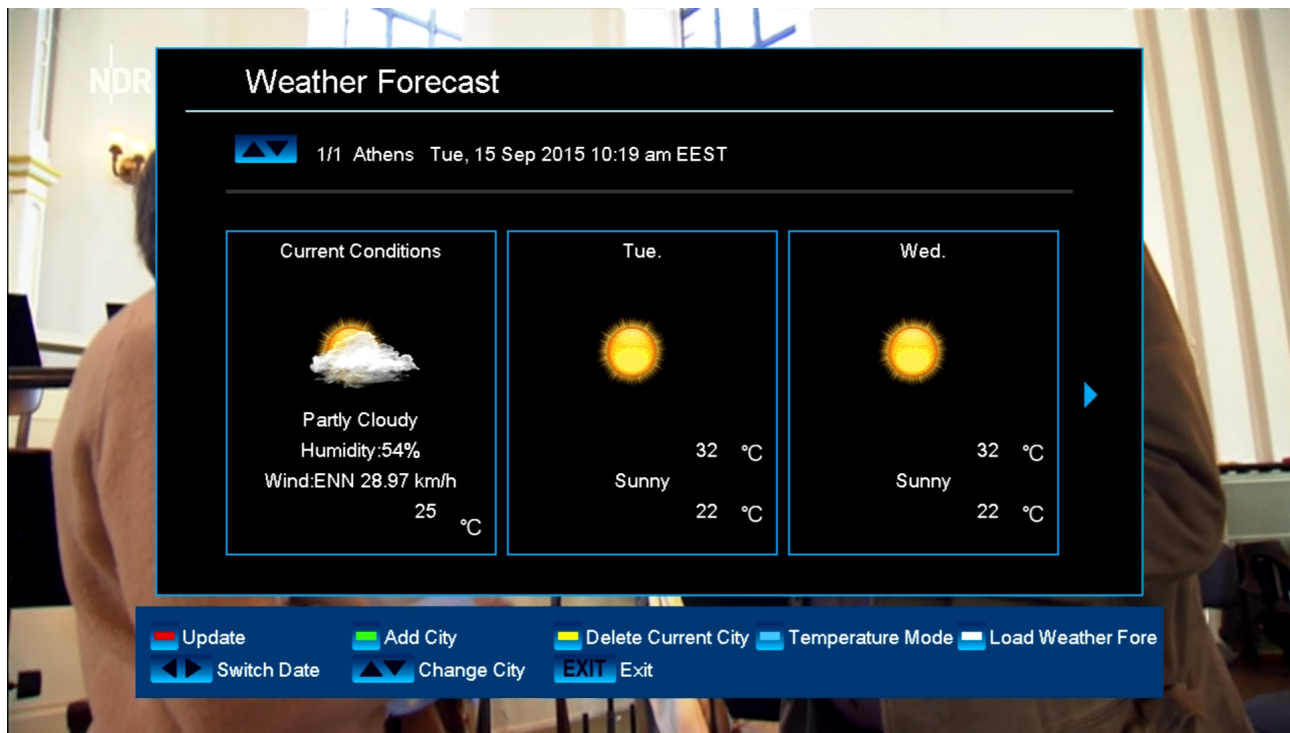


Use the red button to start the process. Please select now how to flash your image. Use the OK button to start the flash process. The flash process starts automatically after the download.



► Menu/Applications

Weather Forecast



It is possible with an Internet connection to have this menu item display current and weather data for the coming days about a specific location. Press the **green button** and use the **arrow buttons** to select and navigate in the letter field and the **OK button** to specify a new location. To confirm, navigate to the OK field and press the **OK button** on the remote control.

If several locations are specified, use the **up/down** arrow buttons to switch between the weather data of the various locations.

Use the **left/right** arrow buttons to browse a few days forward or back again.

Exit the 'Weather Forecast' menu by pressing the **EXIT button**.

RSS Reader

This menu item offers access to brief information from the Internet. The list of the information providers (RSS channel list) can be found in the left column and in the right column (RSS news list), news reports and information provided, if available via Internet.

Use the **up/down** arrow buttons to switch line-by-line in the lists and the **left/right** arrow buttons to switch the column. Use the **OK button** to display more information about the messages in the right column.

The selected list is updated by pressing the **red button**, the green button adds a new channel, the **yellow button** removes a channel from the list and the blue button edits a channel entry.

How to add an information channel:

1. Make sure that your receiver is connected to the Internet.
2. Press the **green button** on the Internet/RSS Reader menu.
3. Indicate a name for the channel. Use the numbers or letter keys of the remote control.
4. Enter this address (URL) of the channel.
5. Press the **red button** to confirm the information.

Notes: Use the numeric key 1 to input the following special characters: . , * ? ! @ . Enter the characters _ - / : via the ZOOM or 0 button. Use the **yellow button** to delete a character, the **green button** to switch between lower and upper case spelling. RSS information channels can be found on the Internet, e.g. under www.rss-verzeichnis.de

Exit the 'RSS Reader' menu by pressing the **EXIT button**.



EDISION®
www.edision.gr

