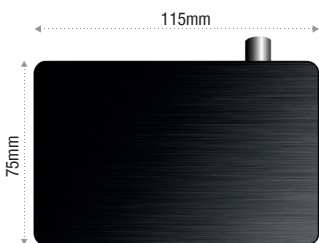


Thank you for choosing an EDISION progressiv hybrid receiver.

Please consider that this information is effective at the time of printing. You are able to find current information and detailed user manuals at the following website: www.edision.gr

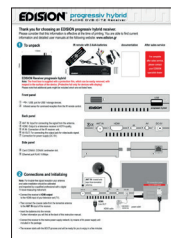
1 To unpack



IR remote with 2 AAA-batteries



documentation



After sales service

For complete after sales service, please contact your EDISION specialist dealer.

EDISION Receiver progressiv hybrid

Note: The front face is supplied with a protection film, which can be easily removed, with respect to the surface of the device. (Protective foil only for devices with display)

Please note that additional parts might be included which are not listed here.

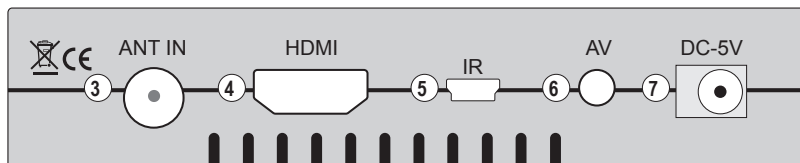
Front panel

- ① USB: port for USB 1-storage devices.
- ② Infrared sensor for command reception from the IR remote control.



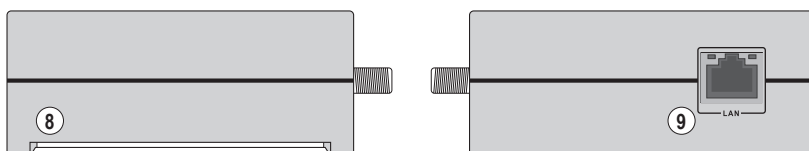
Back panel

- ③ ANT IN: Input for connecting the signal from the antenna.
- ④ HDMI: Output to a television receiver in HDTV-quality.
- ⑤ IR IN: Connection of the IR receiver unit.
- ⑥ AV OUT: For connecting the output jack for video/audio signal.
- ⑦ Connection for power supply (DC 5V).



Side panel

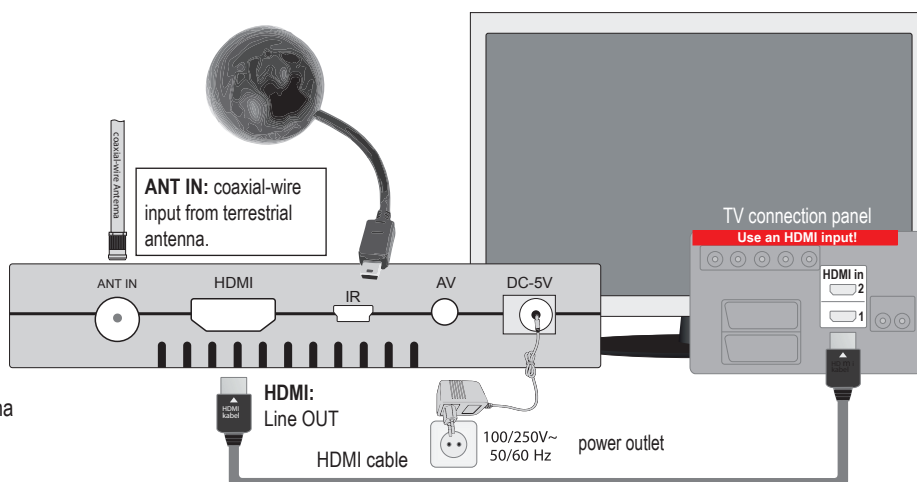
- ⑧ Card CONAX: CONAX cardreader slot.
- ⑨ Ethernet port RJ45 10/Mbps



2 Connections and Initializing

Note: For trouble-free signal reception your antenna and cable installation should be calibrated and inspected by a qualified professional with a digital TV-level-measuring instrument.

- Connect the receiver's **HDMI-output** to the HDMI-input of your television set (TV).
- Then connect the coaxial cable from the terrestrial antenna to the **ANT IN** input of the receiver.
- Insert the batteries into the remote.
- Further information you will find at the back of this instruction manual.
- Connect the receiver to the mains power supply network, by means of its power supply unit included in the package.
- The receiver starts with the BOOT-process and will be ready for you to enjoy in a few minutes.



3 Remote Control Unit

Note: Many of the listed keys have multiple functions which are shown upon menu display. Some keys and functions refer to optional features. Important features and keys are explained in the functions below. The respective keys are in red on the graphs.

You are watching a channel, but you want to switch to another channel.
» This is how to switch the channel...



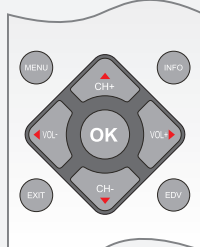
Option 1:

While watching TV use the up-down arrow keys to switch to another channel.



Option 2:

Use the number keys to choose channel directly. Number 0 you can enter using the ZOOM key.



Option 3:

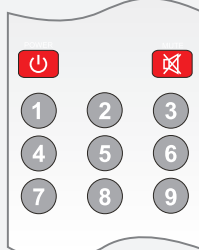
Use the OK-key to enter the channel-list. Navigate with the arrow keys to the selected channel. Push the OK-key for confirming channel selection.

While watching a TV-channel or listening to a radio-channel, you want to modify the volume. » This is how to change the volume at the receiver...



Option 1:

Push the VOL+> arrow key while watching TV or listening to the radio, in order to turn up the volume. By pushing the <VOL- key you turn down the volume.



Option 2:

By pressing the MUTE key once while watching tv or listening to the radio, you turn off the volume. Pressing key MUTE again, activates the volume to previous level.

» How to use the main menu...



Press the MENU key to enter the main menu. Use the arrow keys to navigate in the menu and confirm your selection with the OK-key. Press the EXIT-key to exit the menu.



Press the OK-key to enter the channel-list. Use the arrow keys and the OK-key for navigating in the menu. Press the EXIT-key to exit from the list.



Use the Page-key in the right side of the IR remote control in order to scroll page by page in the channel-lists. For channel program information, press the INFO-key. For station search, press the FIND-key.



POWER
Receiver On/off.

MUTE
Sound volume mute on/of.

1 ... 0 For TV/Radio station selection, manual enter of numbers and letters in the menus.

TV/RADIO
Switches from tv to radio and vice versa.

RECALL
Returns to previous channel.

MENU
Displays the main menu.

INFO
Displays the information bar.

With the arrow keys you can scroll in the lists up and down, left and right or regulate the volume. With the OK-key you confirm your menu-entry or activate the channel-list.

EXIT
Exits a menu/pop-up window.

EDV
Selection of EDIVISION electronic program-support.

FIND
Program List Search.

F
Displays a file-list.

PAGE
Channel List Scroll Forwards or Backwards.

FAV
Displays the favourite-lists.

SAT
Displays the lists of satellites.

V.FORMAT
Changes the TV display format.

REW
Enables fast rewind.

FF
Enables fast forward.

REW
Returns to the start, alternatively to the previous recording.

FF
Switches to the end, alternatively to the next recording.

REC
Manual recording start.

PAUSE
Play start/pause.

STOP
Stops timeshift, recording or playing.

AUDIO
Activates the audio-menu.

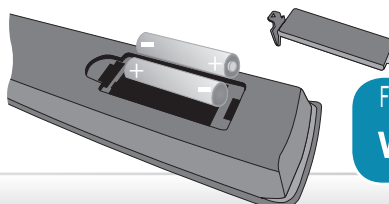
OPTION
Option key.

TXT
Activates the menu "Subtitle/teletext".

WebTV
Web TV key.

Inserting batteries into the remote control

Pay attention to the correct polarity while inserting the batteries (2XAAA). If the remote is not to be used for extended period of time please remove the batteries to avoid potential damage to the remote. Dispose of the batteries properly according to recycle procedures.



For further information, please visit our website:

www.edision.gr